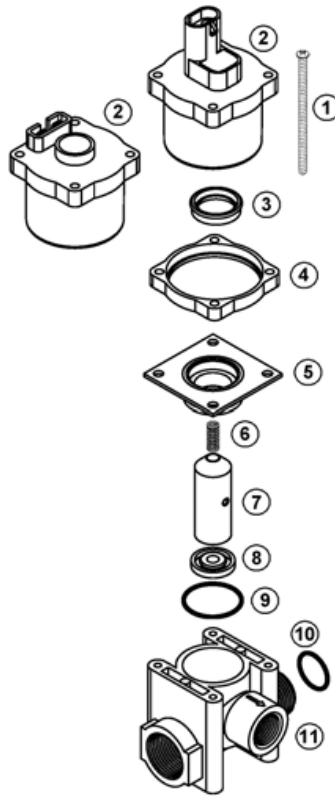


No. 2100B SOLENOID VALVE PARTS LIST



Ref	Part No.	Description	No. Req
1	5308	No. 8 X 2 ½ Screw	4
2	2645	Coil Weather Pack Terminals	1
2	2646	Coil ¼" Spade Terminals	1
3	⁰ 2254	Viton Lip Seal, Standard	1
4	2658	Adaptor Ring	1
5	2648	Base Plate	1
6	^{0*} 2176	Spring	1
7	2092	Plunger	1
8	⁰ 2093	Seal, Viton, Standard	1
9	^{0*} 2339	"O" Ring, 024 Viton	1
10	2166	"O" Ring, 018 Viton	1
11	2351	Body	1
	2252	Aflas Repair Kit. Consists of items marked with *	
	2255	Viton Repair Kit. Consists of items marked with ⁰ .	

SPECIFICATIONS

Valve Housing	Glass Filled Nylon
Wetted Metal Parts	430 Stainless Steel
Seal and "O" Rings	Aflas or Viton
Coil	Epoxy Encapsulated
Terminals	¼" Male Tabs or Weather Pack
Voltage	12 Volt DC
Current	2.4 Amp at 12 Volt
Operating Pressure	125 PSI (850 kPa) Maximum
Flow	0-10 GPM (0-38 L/M) 4.5 cv
Temperature	120° F (50° C) Maximum

DISASSEMBLY

It is not necessary to take the valve out of the line to service it. The valve can be disassembled by removing the four No. 8 screws (1). Next pull the coil (2) and the base plate (5). Pull the seal (8) from the plunger (7). Remove the lip seal (3) from the base plate.

ASSEMBLY

The seal can be installed by pressing down on the center of it while rotating it on the plunger (7). Be sure it is properly seated. Next set the plunger in the valve body (11) and place the base plate (5) over it. Carefully slip the lip seal (3) over the plunger and into the groove in the base plate. Coat the base plate groove with light grease. Be sure to install "O" ring (9) and spring (6). Do not over-tighten the No. 8 screws.