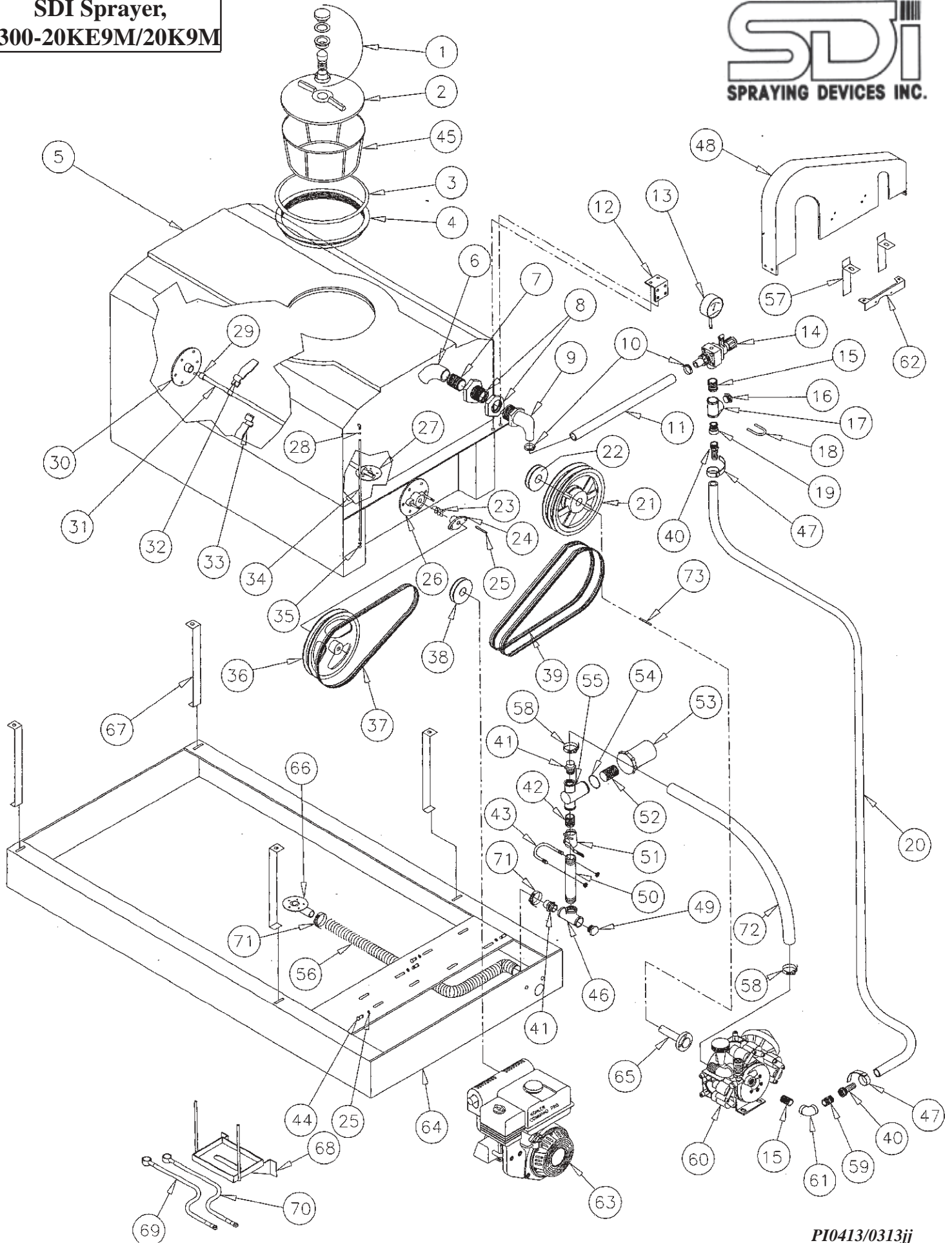


**SDI Sprayer,  
300-20KE9M/20K9M**



PI0413/0313jj

## SDI Sprayer Model 300-20KE9M/20K9M

Item Number	Part Number	Description	Qty
1	15-056	Vent Assembly 16" Lid	1
2	15-053	Lid Only Threaded 16"	1
3	15-055	C-Gasket for Threaded Lid 16"	1
4	15-054	Threaded Rim 16"	1
5	15-304	Tank	1
6	52-277	Elbow 1" x 45° PVC	1
7	53-207	Nipple 1" Close PVC	1
8	16-117	Tank Fitting 1" DT	1
9	52-120	Elbow Adapter 1 MPT x 1" HB	1
10	24-116	Hose Clamp #16	2
11	21-938	Hose 1" ID, Per Foot	Specify
12	11-144	Relief Valve Bracket	1
13	27-100	0-100 PSI Gauge	1
14	78-800	Relief Valve	1
15	51-501SS	Close Nipple 3/4" SS	2
16	50-580SS	Plug 3/4" SS	1
17	50-520SS	Tee 3/4" SS	1
18	47-103	U-Bolt	1
19	55-108	Adapter 3/4 MPT x 3/4" FGHT	1
20	81-750	Hose 3/4" 800 PSI, Per Foot	Specify
21	66-214	Pulley 14"	1
22	66-136	Pulley	1
23	16-950	Teflon Packing 1/4" ID, Per Inch	Specify
24	16-275	Packing Nut 1"	1
25	46-150	Key 1/4 x 1/4 x 1-1/2"	2
26	16-274	Packing Gland 1"	1
27	11-101	Vortex Plate	1
28	24-105MSS	Hose Clamp	2
29	16-283	Shaft Collar 1"	2
30	16-291	Rear Bearing 1"	1
31	16-555	Agitator Shaft 1 x 72"	1
32	16-263	Right Agitator Paddle	2
33	16-262	Left Agitator Paddle	2
34	16-922	Clear Tubing 3/8" ID, Per Inch	Specify
35	16-100	Elbow Fitting 3/8"	2
36	66-111	Pulley 9.75 OD x 1" Bore	1
37	67-380	Belt 5L380	1
38	66-226	Pulley 2.65 2GR 3V 1" Bore	1
39	67-630	Belt 3VX630	2
40	55-211	Female Hose Coupling 1/2" HB	2
41	53-437	Adapter 1-1/4 MPT x 1-1/4" HB Poly	2
42	51-701SS	Close Nipple 1-1/4" SS	1
43	47-105	U-Bolt	1
44	45-230	Adjusting Screw 1/2 x 2" NC	1

## SDI Sprayer Model 300-20KE9M/20K9M

Item Number	Part Number	Description	Qty
45	16-203	Strainer Basket for 15-040 Lid	1
46	50-720SS	Tee 1-1/4"	1
47	24-203	Hose Clamp Bandit JS203	2
48	15-123	Belt Guard	1
49	50-780SS	Plug 1-1/4"	1
50	51-703SS	Nipple 1-1/4 x 3" SS	1
51	60-326	Ball Valve 1-1/4"	1
52	57-123	20 Mesh Screen	1
53	57-117S	Solid Bowl for Strainer	1
54	57-116	Gasket for Strainer	1
55	57-121	Head (Body) for 57-120 Poly	1
56	21-933	Suction Hose 1-1/2" ID, Per Foot	Specify
57	11-319	Belt Guard Bracket	2
58	24-120SS	Hose Clamp #20 SS	2
59	55-106	Adapter 3/4 MPT x 3/4" MGHT	1
60	78-0020	20 GPM Diaphragm Pump	1
61	51-510SS	Street Elbow 3/4" x 90° SS	1
62	11-318	Belt Guard Flange	1
63	20-1090E	9.5 HP Kohler Electric Engine	1
63	20-1090	9.5 HP Kohler Recoil Engine	1
64	10-314	Frame	1
65	63-310	Pump Shaft	1
66	17-131	Suction Flange 1-1/2"	1
67	10-303	Hold Down Straps	4
68	11-191	Large Battery Box	1
69	72-235	Battery Cable, 35"	1
70	72-216	Battery Cable, 18"	1
71	24-124SS	Hose Clamp #24 SS	2
72	21-932	Suction Hose 1-1/4" ID, Per Foot	Specify
73	46-250	Key 1/4 x 1/4 x 12-1/2"	1