

Set-Up Instructions
SDI Motorized Valves

for the following:

EC-VMAFS

and

4119052

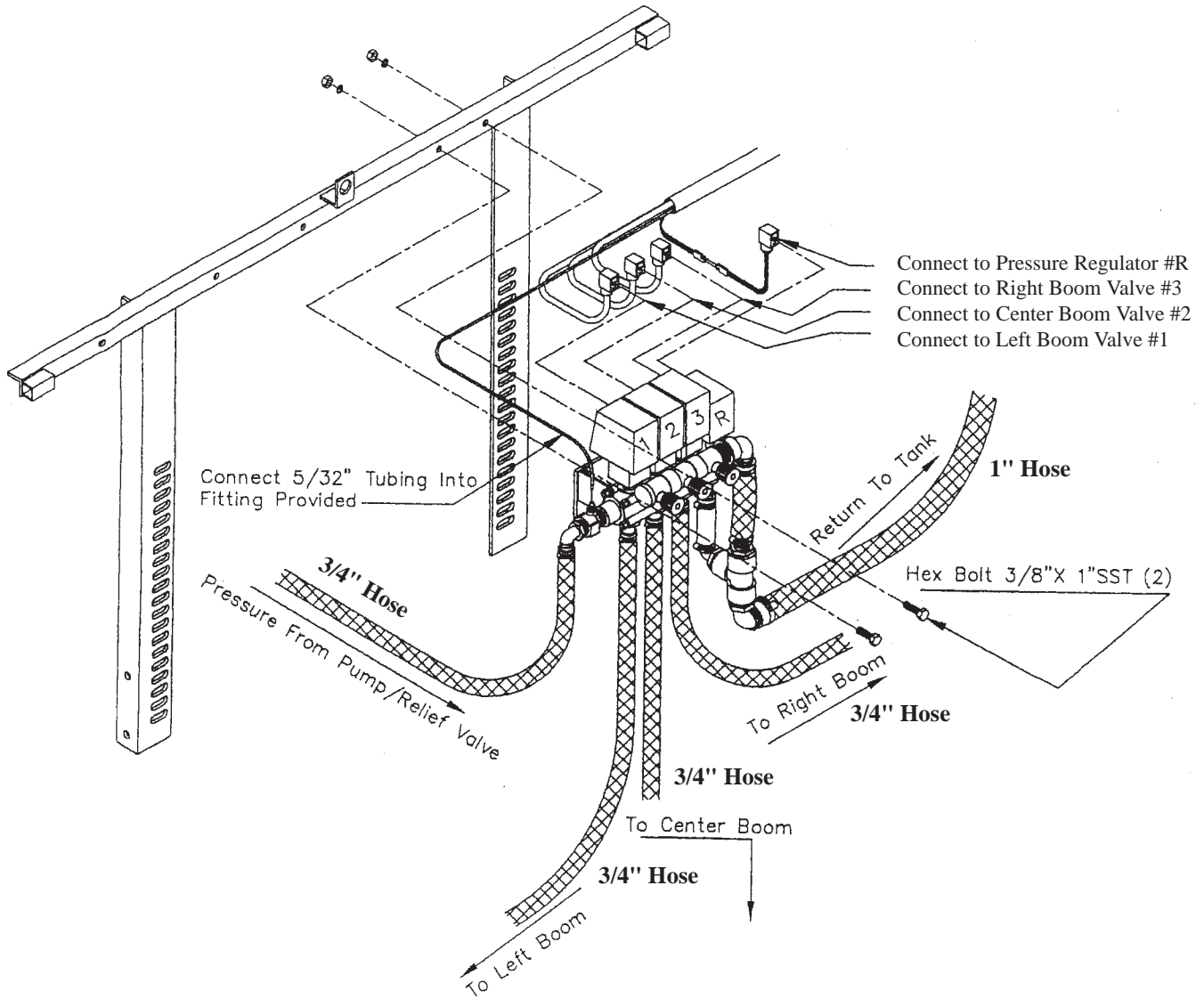
All Function Control

Published by:



Spraying Devices, Inc.
P. O. Box 3107, Visalia, CA. 93278-3107
Tel: (559)SDI-5555 • Fax: (559)SDI-5591
email: sales@sprayingdevices.com

SDI Set-Up Diagram



Step 1:

Bolt Valve Assembly, Part #18-300, onto cross member of boom using 3/8 x 1" bolts, lock washers and nuts (supplied).

Note: *If boom had adjustable channel cross angle, use 3/8" adjustable channel nuts (supplied).*

Step 2:

Install D.I.N. connectors from wiring loom using water resistant D.I.N. connector gasket and screws included in the 18-200 kit, to Motorized Valves and Pressure Regulator.

Note: *If harness is supplied on the Service Vehicle. D.I.N. connector with 2-prong plus Part #18-321 is included in the 18-320 kit.*

Step 3:

Plug 5/32" tubing into tubing adapter located next to valve #1.

Step 4:

Install ball valve and 3/4" hose barb adapter elbow (included in 18-300 kit) to pump outlet. Run 3/4" hose (cut to desired length), from pump to inlet on the Motorized Valve.

Step 5:

Remove 1" plus from return fitting on tank. Install 1" hose barb elbow to return fitting.

Step 6:

Install bypass return hose from 1" hose barb elbow on Motorized Valves to 1" elbow on tank.

Step 7:

Cut 3/4" hose to length and install from valves to boom inlet adapters (allow extra length on outer wing sections to allow for breakaway capabilities).

Step 8:

Install Control Box to Control Mount.

Using All Function Control Box, plug into socket located near glove box.

Step 9:

Install 5/32" tubing into adapter on Control Box.

Setting Pressure for Motorized Controls

The following instructions are designed to assist you, the customer, with the proper setting and testing of your **Motorized Control Unit**.

For models with a diaphragm pump:

1. Shut off ball valve to boom.
2. Set **manual relief valve to 70-80 PSI** - (*this is used mainly as a safety valve and will not operate below that pressure*).
3. Open ball valve to booms.

For all models (*for centrifugal pump models, the first three steps are not required*):

4. Close all three (3) **Metered Bypass Valves** (red knobs), by turning knobs in a clockwise direction as far as they will go (Figure 1).
5. Open all three (3) sections of the boom from the **Control Panel**. Set desired operating pressure using electric **Control Switch** on the **Control Panel**. To set the **Metered Bypass Valve**, close one boom section at a time. Then, open the **Metered Bypass Valve** for that boom section until the desired operating pressure is achieved.

Example: Desired pressure is 40 PSI, to set **Metered Bypass Valve**:

- A. Shut off left boom section on **Control Panel**.
 - B. Pressure will read more than 40 PSI.
 - C. Using left **Metered Bypass Valve**, open valve until operating pressure returns to **40 PSI**.
6. **Repeat** the above procedure for the **center and right boom sections**, making sure the other two (2) boom sections are open.

Motorized Control Valves

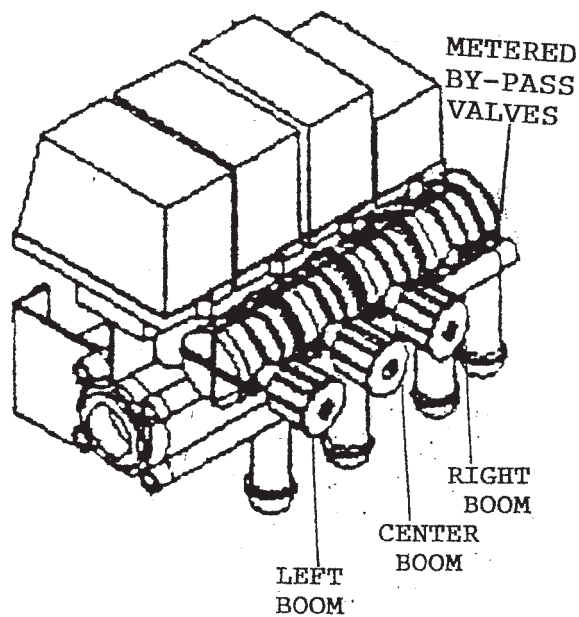
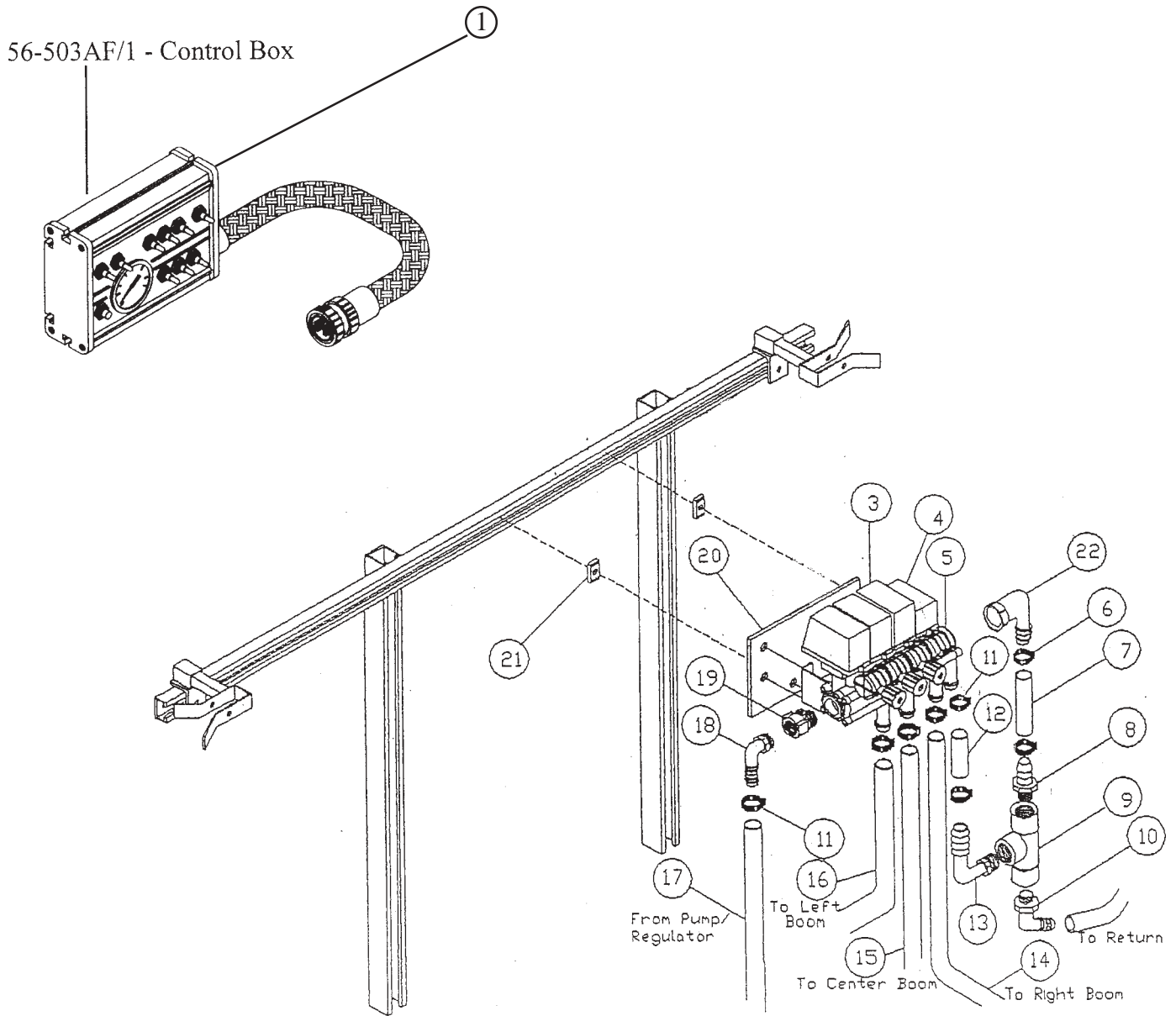
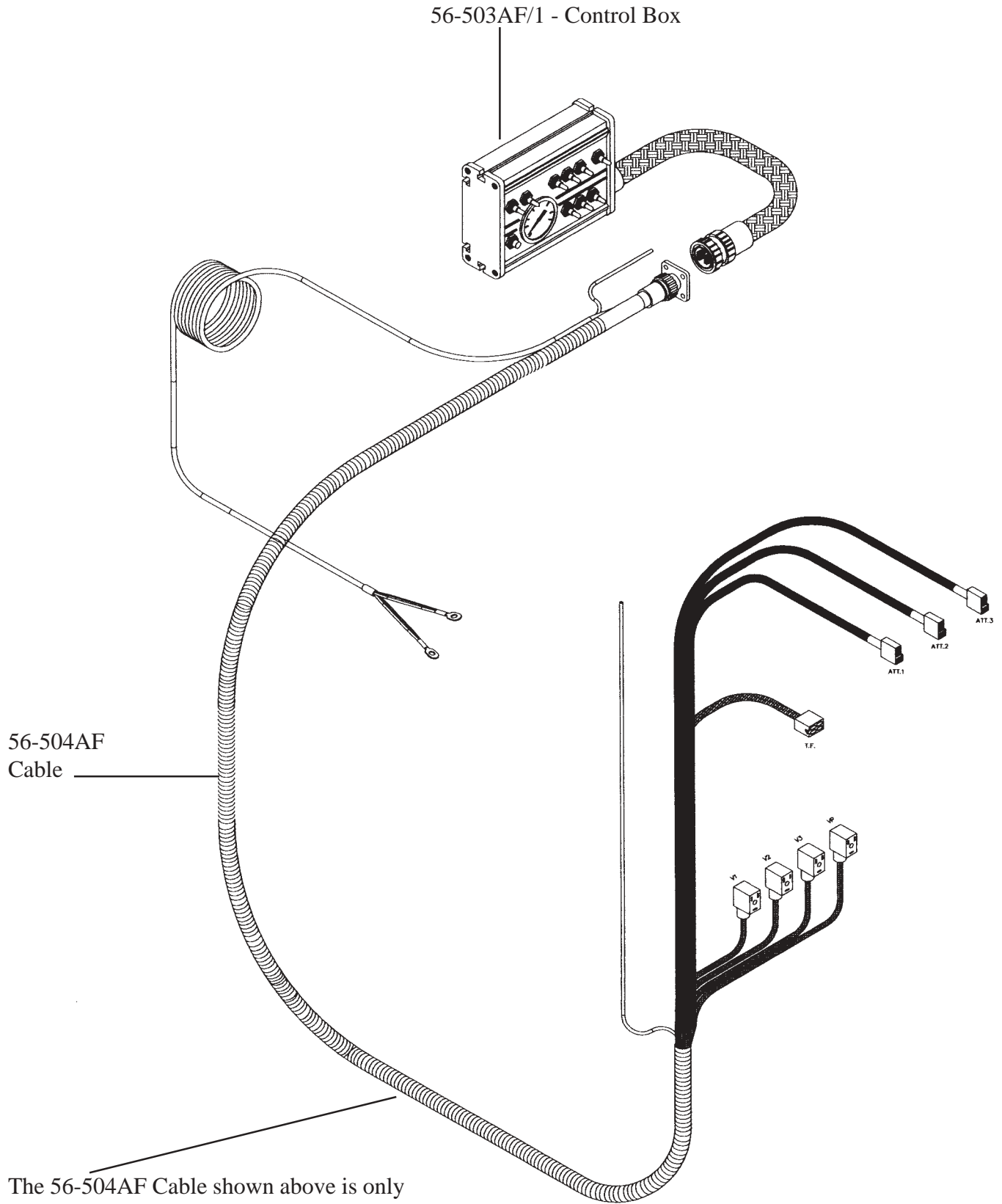


Figure 1

SDI Motorized Boom Valve Controls



SDI Motorized Boom Valve Controls



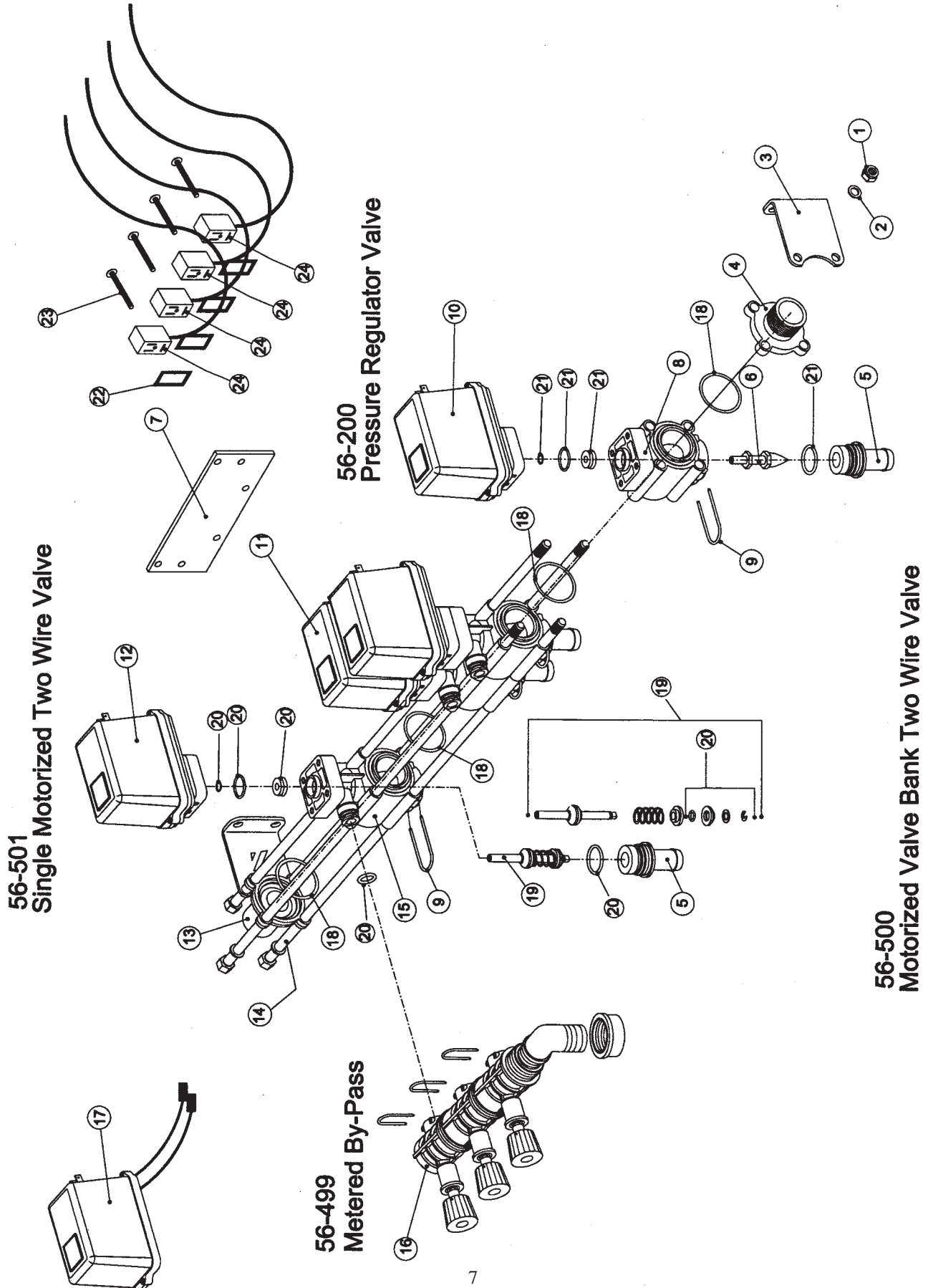
56-504AF
Cable

The 56-504AF Cable shown above is only used on the *EC-VMAFS Motorized Valves*

SDI Motorized Boom Valve Controls

Item Number	Part Number	Description	Qty
1	56-503AF/1	Control Box	1
3	56-500	Three Motorized Valves	1
4	56-200	Pressure Regulating Valve	1
5	56-499	Metered Bypass	1
6	24-116	Clamp	6
7	21-938	Hose 1" ID, Per Foot	Specify
8	53-435	Adapter 1 MPT x 1" HB, Poly	1
9	53-826	Tee 1" NPT, Poly	1
10	52-120	Elbow 1 MPT x 1" HB, Poly	2
11	24-112	Hose Clamp #12	10
12	21-930	Hose 3/4" ID, Per Foot	Specify
13	52-119	Elbow 1 MPT x 3/4" HB, Poly	1
14	21-930	Hose 3/4" ID, Right Boom	**
15	21-930	Hose 3/4" ID, Center Boom	**
16	21-930	Hose 3/4" ID, Left Boom	**
17	21-930	Hose 3/4" ID, Pump	**
18	52-112	Elbow 3/4 MPT x 3/4" HB, Poly	1
19	56-2152	Adapter 3/4 MPT x 3/4 MPT x 1/8" Port	1
20	11-639	Mounting Plate	1
21	41-106	Strut Nut 3/8"	2
22	56-511	Fly Nut Assembly	1
<i>The following items are not illustrated:</i>			
	11-021	Control Arm	1
	11-022	Control Stand	1
	11-023	Control Stand Clamp	1
	21-938	Hose 1" ID, Per Foot	Specify
	*Note	Contact Jacobsen, a Textron Company for this harness.	
	**Note:	25' of 21-930 3/4" ID hose included - cut to length required.	

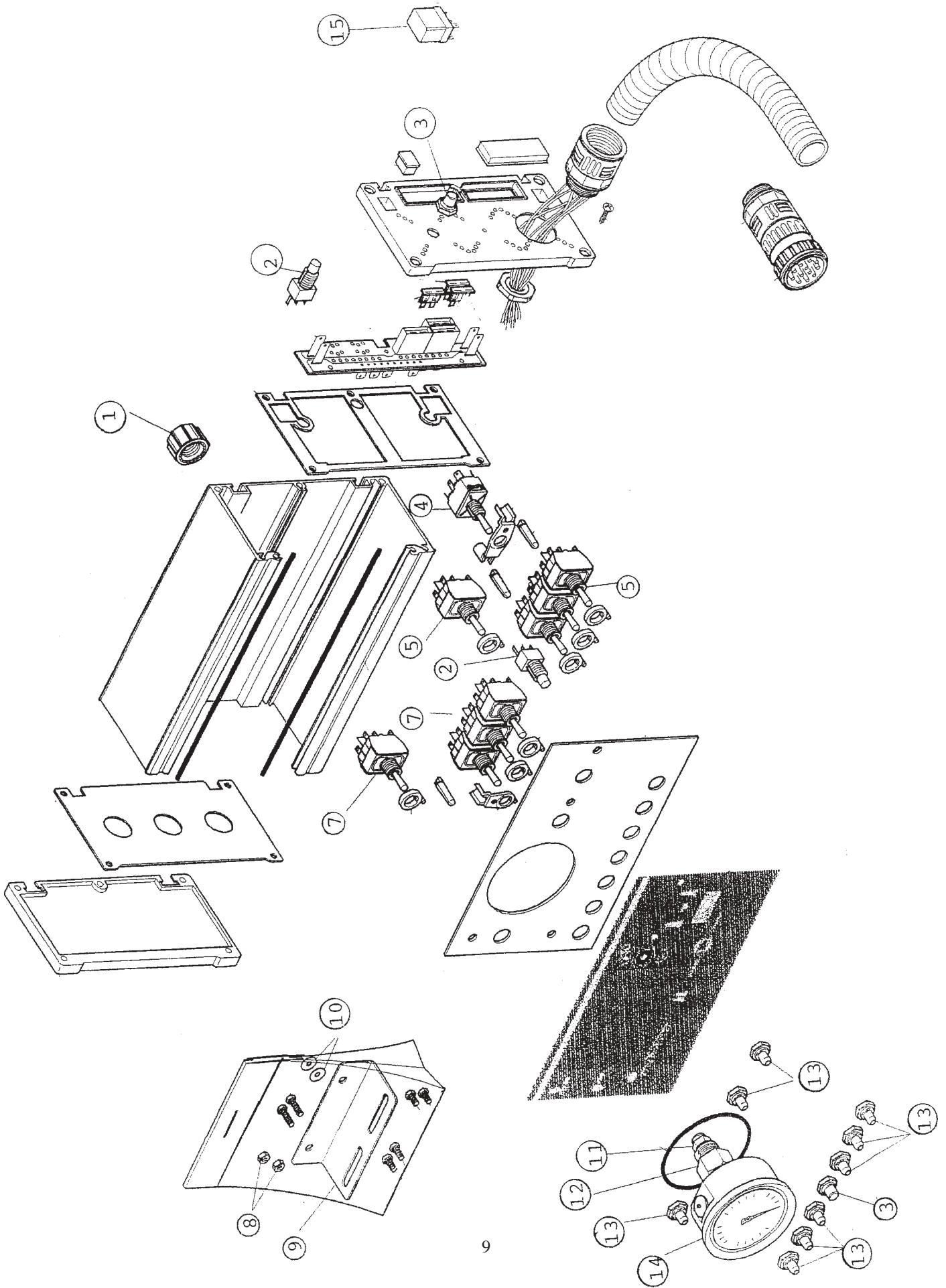
SDI Motorized Valve Bank Two Wire - 56-500



SDI Motorized Two Wire Valve Bank #56-500

Item Number	Part Number	Description	Qty
1	56-530	Hex Nut	4
2	56-529	Washer	8
3	56-505	End Mounting Plate	2
4	56-514	Outlet Adapter 3/4" MPT	1
5	56-105	Slip Hose Barb Fitting 3/4"	4
6	56-203	Regulator Stem	1
7	11-639	SDI Mounting Plate	1
8		No Longer Available/Regulator Valve	
9	56-106	Locking Pin	4
10	56-201	Regulator Motor Assembly	1
11	56-501	Motorized Two Wire Valve	3
12	56-100A	Motor Assembly 56-501	3
13	56-513	Inlet Adapter 3/4" FPT	1
14	56-528	Hex Bolt 10" Lg.	4
15	56-101	Valve Body 56-501	3
16	56-499	Metered Bypass after 1/07	1
17	56-525	Valve Cover Only	4
18	56-107	O-ring Between Valves	5
22	56-490	DIN Connector Gasket	4
23	56-491	DIN Connector Screw	4
24	56-541	DIN Connector Cable	4
		<u>Repair Kits:</u>	
19	56-538	Plunger Kit for 56-501 Two Wire Valve	3
20	56-539	Seal Kit for 56-501 Two Wire Valve	3
21	56-540	Seal Kit for 56-200 Regulator Valve	1

SDI Control Box #56-503AF/1



SDI Complete Box Assembly #56-503AF/1

Item #	Part #	Description	Qty.
1	61-527	Reducer 1/4 x 1/2"	1
2	61-531	Main Power Switch/Dual Foamer Switch	2
3	61-517	Main Power Boot	2
4	61-260	On/Off Switch	1
5	61-515	Boom Lift Pressure Switch	4
7	61-500	On/Off Boom Switch	4
8	61-606	Nut	2
9	61-525	Mounting Bracket	1
10	61-118	Washer	2
11	61-528	Tubing Connector 1/8"	1
12	61-535	Long Pressure Gauge Adapter	1
13	61-516	Switch Boot Toggle Switch	9
14	56-509	Liquid Pressure Gauge 0-100 PSI	1
15	61-530	Relay 12V 3 AMP	1

