

## Set-Up Instructions

*for*

**EC-VMAFS and 4119052**

**All Function Control  
Motorized Valves**

*Published by:*

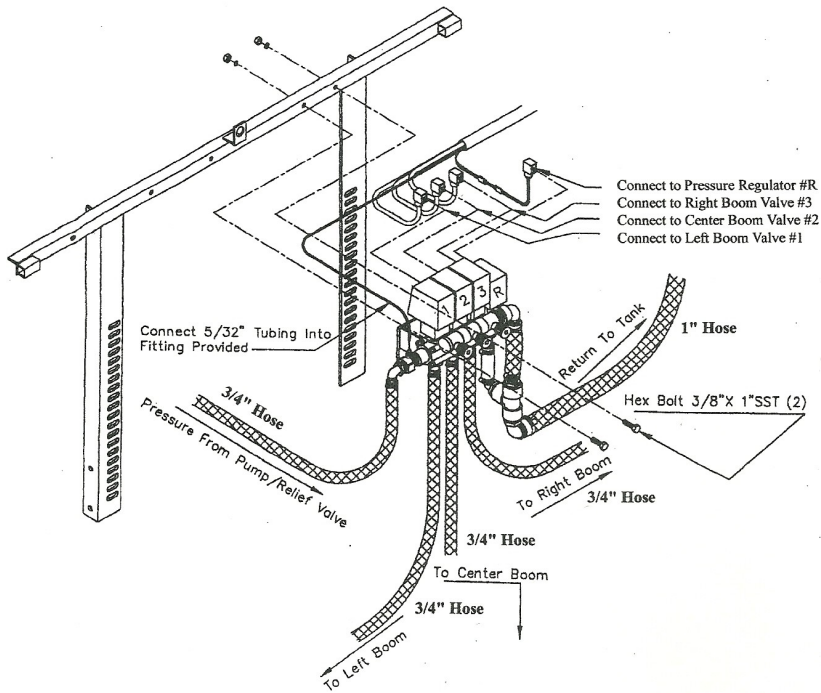
Spraying Devices, Inc.  
P. O. Box 3107,  
Visalia, CA. 93278-3107, USA  
Tel: (559)734-5555, Fax: (559)734-5591  
Email: [sales@sprayingdevices.com](mailto:sales@sprayingdevices.com)  
[www.sprayingdevices.com](http://www.sprayingdevices.com)



Form No. 1948/0912jh

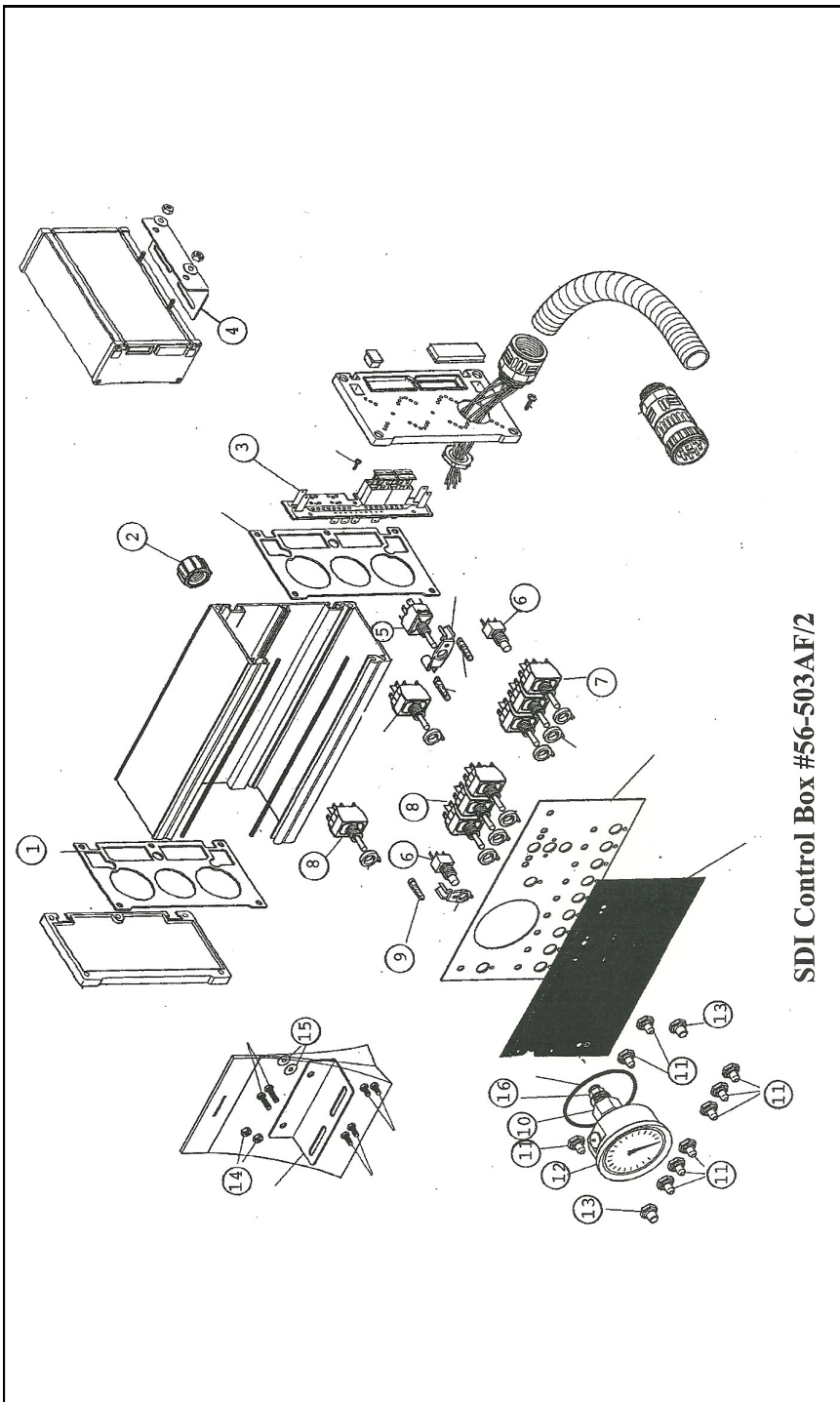


## Set-Up Diagram



## SDI Complete Box Assembly #56-503AF/2

Item No.	Part Number	Description	Qty
1	61-651	Gasket	1
2	61-527	Reducer 1/4 x 1/2"	2
3	61-650	Fuse Circuit Board	1
4	61-525	Mounting Bracket	1
5	61-260	On/Off Switch	1
6	61-531	Main Power Switch/Dual Foamer Switch	2
7	61-515	Boom Lift Pressure Switch	4
8	61-500	On/Off Boom Switch	4
9	61-620	Light Bulb Boom Switch	1
10	61-535	Long Pressure Gauge Adapter	1
11	61-516	Switch Boot Toggle Switch	9
12	56-509	Pressure Regulator	1
13	61-517	Main Power Boot	2
14	61-606	Nut	2
15	61-118	Washer	2
16	61-528	Tubing Connector 1/8"	1



SDI Control Box #56-503AF/2

## SDI Set-Up Instructions

### Step 1:

Bolt Valve Assembly, Part #18-300, onto cross member of boom using 3/8 x 1" bolts, lock washers and nuts (supplied).

**Note:** If boom has adjustable channel **cross** angle, use 3/8" adjustable channel nuts (supplied).

### Step 2:

Install D.I.N. connectors from wiring loom using water resistant D.I.N. connector gasket and screws included in the #18-200 kit, to Motorized Valves and Pressure Regulator.

**Note:** If harness is supplied on the Service Vehicle, D.I.N. connector with 2-prong plug, Part #18-321, is included in the 18-320 kit.

### Step 3:

Plug 5/32" tubing into tubing adapter located next to valve #1.

### Step 4:

Install ball valve and 3/4" hose barb adapter elbow (included in #18-300 kit), to pump outlet. Run 3/4" hose (cut to desired length), from pump to inlet on the Motorized Valve.

### Step 5:

Remove 1" plug from return fitting on tank. Install 1" hose barb elbow to return fitting.

### Step 6:

Install bypass return hose from 1" hose barb elbow on Motorized Valves to 1" elbow on tank.

### Step 7:

Cut 3/4" hose to length and install from valves to boom inlet adapters (allow extra length on outer wing sections to allow for breakaway capabilities).

### Step 8:

Install Control Box to Control Mount.

Using All Function Control Box, plug into socket located near glove box.

### Step 9:

Install 5/32" tubing into adapter on Control Box.

## Setting Pressure for Motorized Controls

The following instructions are designed to assist you with the proper setting and testing of your Motorized Control Unit.

### For models with a diaphragm pump:

1. Shut off ball valve to boom.
2. Set manual relief valve to 70-80 PSI (*this is used mainly as a safety valve and will not operate below that pressure*).
3. Open ball valve to booms.

### For all models (for centrifugal pump models, the first three steps are not required):

4. Close all three (3) **Metered Bypass Valves** (red knobs), by turning knobs in a clockwise Direction as far as they will go (Figure 1)

5. Open all three (3) sections of the boom from the **Control Panel**. Set desired operating pressure Using electric **Control Switch** on the **Control Panel**. To set the **Metered Bypass Valve**, close one (1) boom section at a time. Then open the **Metered Bypass Valve** for that boom section until the desired operating pressure is achieved.

**Example:** Desired pressure is 40 PSI -  
To set **Metered Bypass Valve**:

- A. Shut left boom section off on the Control Panel.
  - B. Pressure will read more than 40 PSI.
  - C. Using left **Metered Bypass Valve**, open valve until operating pressure returns to 40 PSI.
6. **Repeat** the above procedure for the **center and right boom sections**, making sure the other two (2) boom sections are open.

Motorized Control Valves:

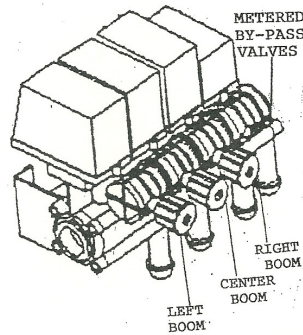
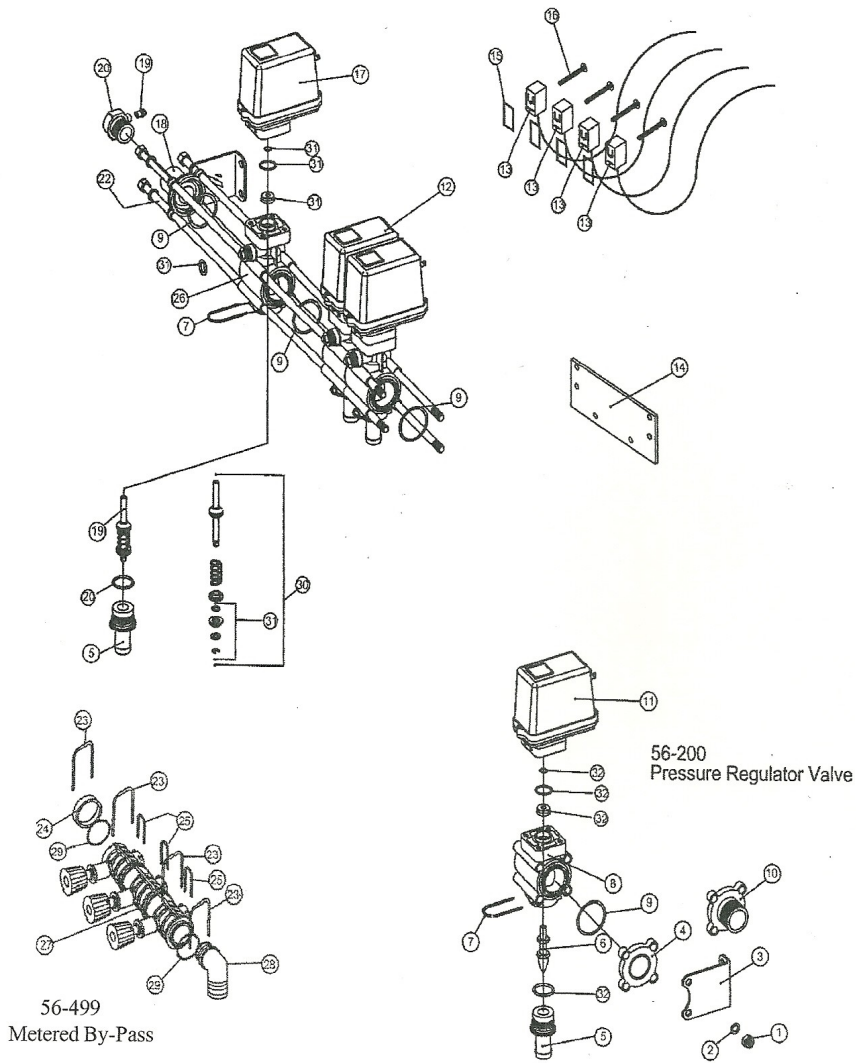


Figure 1

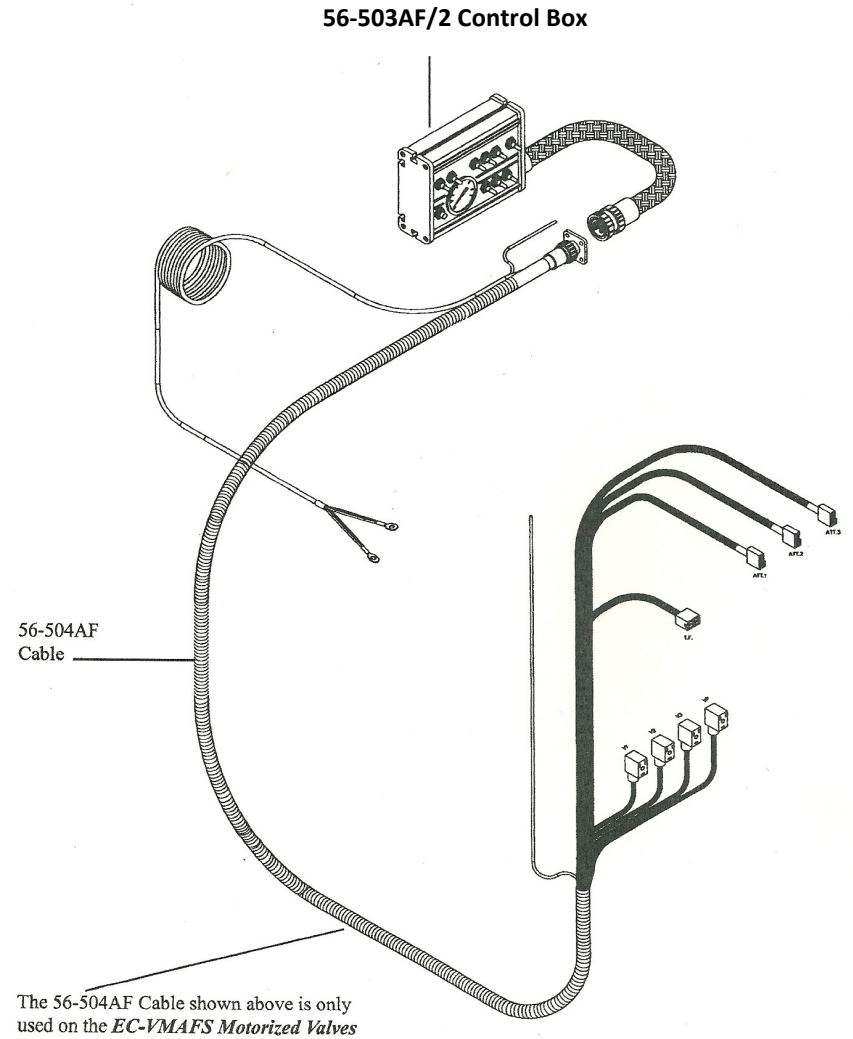
## SDI Motorized Valve Bank 2-Wire #56-500

Item No.	Part Number	Description	Qty
1	56-530	Hex Nut	4
2	56-529	Washer	8
3	56-505	End Mounting Plate	2
4	56-597	Blank Plate	1
5	56-105	Hose Fitting 3/4" HB X Slip	4
6	56-203	Regulator Stem	1
7	56-106	Locking Pin	4
8		Regulator Valve Body—Only included with #11	1
9	56-107	O-ring	5
10	56-514	Outlet Flange 3/4" MPT	1
11	56-201	Regulator Motor Assembly	1
12	56-501	Valve Assembly, Two Wire	1
13	56-541	D.I.N. Connector	4
14	11-369	SDI Mounting Plate	1
15	56-490	Gasket	4
16	56-491	Screw	4
17	56-100A	Motor Assembly for 56-501	3
18	56-513	Inlet Flange 3/4" FPT	1
19	56-510	Adapter 1/8 MPT x 5/32" Slip	1
20	56-2152	Adapter 3/4 MPT x 3/4 FPT x 1/8" FPT	1
21	56-525	Motor Cover	4
22	56-528	Hex Bolt 10"	4
23	56-596	Clip Pin	4
24	56-600	End Cap	1
25	56-517	Clip Pin	3
26	56-101	Valve Body	3
27	56-499	Metered Bypass after 1/07	1
28	56-599	Elbow Slip x 3/4" HB	1
29	56-598	O-ring	4
<b>Repair Kits:</b>			
30	56-538	Plunger Kit	1
31	56-539	Seal Kit	1
32	56-540	Seal Kit for Regulator Valve	1

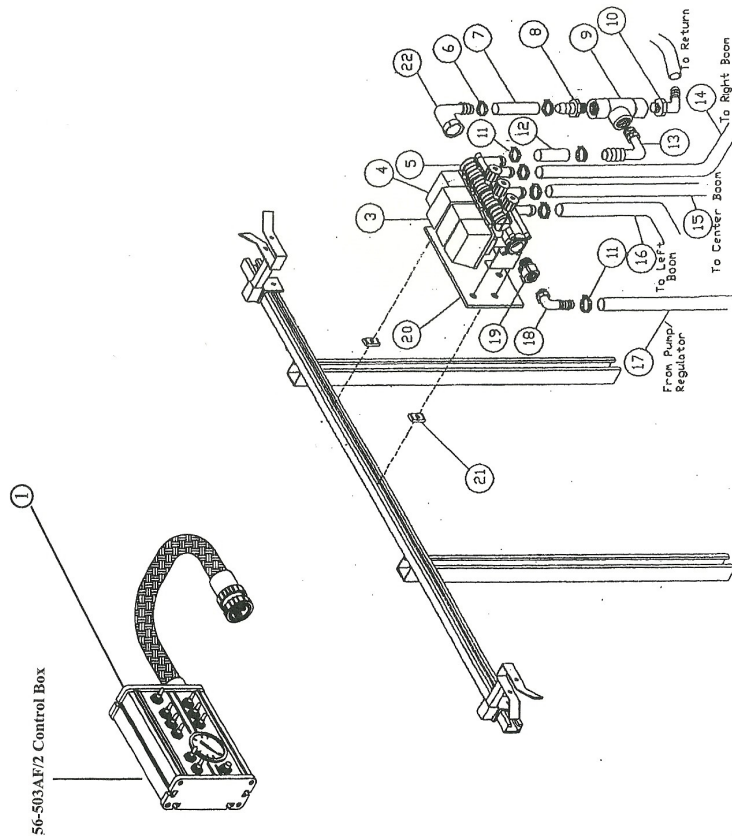
## SDI Motorized Valve Bank 2-Wire #56-500



## SDI Motorized Boom Valve Controls



## SDI Motorized Boom Valve Controls



## SDI Motorized Boom Valve Controls

Item No.	Part Number	Description	Qty
1	56-503AF/2	Control Box	1
3	56-500	Three Motorized Valves	1
4	56-200	Pressure Regulating Valve	1
5	56-499	Metered Bypass	1
6	24-116	Clamp	6
7	21-938	Hose 1" ID, Per Foot	Specify
8	53-435	Adapter 1 MPT x 1" HB, Poly	1
9	53-826	Tee 1" NPT, Poly	1
10	52-120	Elbow 1 MPT x 1" HB, Poly	2
11	24-112	Hose Clamp #12	10
12	21-930	Hose 3/4" ID, Per Foot	Specify
13	52-119	Elbow 1 MPT x 3 HB, Poly	1
14	21-930	Hose 3/4 ID, Right Boom	**
15	21-930	Hose 3/4 ID, Center Boom	**
16	21-930	Hose 3/4" ID, Left Boom	**
17	21-930	Hose 3/4" ID, Pump	**
18	52-112	Elbow 3/4 MPT x 3/4" HB, Poly	1
19	56-2152	Adapter 3/4 MPT x 3/4 MPT x 1/8" Port	1
20	11-639	Mounting Plate	1
21	41-106	Strut Nut 3/8"	2
22	56-599	Elbow Slip x 3/4" HB	1

*The following items are not illustrated:*

11-021	Control Arm	1
11-022	Control Stand	1
11-023	Control Stand Clamp	1
21-938	Hose 1" ID, Per Foot	Specify

**NOTE: Contact Jacobsen for harness**

**\*\* Note:** 25' of 21-930 3/4" ID hose included—cut to lengths required.