

Set-Up Instructions

for

EC-VMAFS and 4119052

All Function Control

Motorized Valves

Published by:

Spraying Devices, Inc.

P. O. Box 3107

Visalia, CA. 93278-3107 US

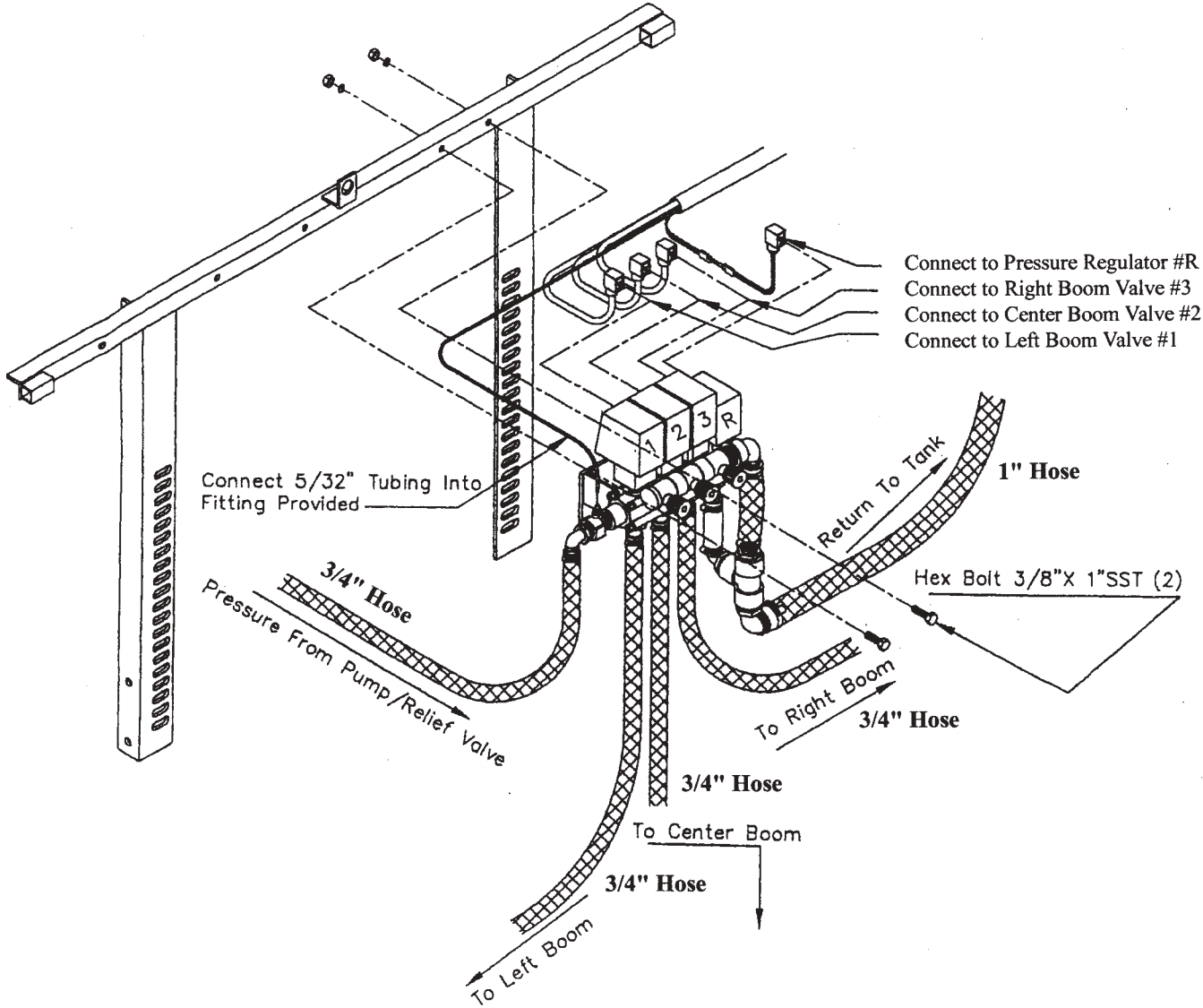
Tel: (559)SDI-5555 • Fax: (559)SDI-5591

email: sales@sprayingdevices.com

www.sprayingdevices.com



SDI Set-Up Diagram



SDI Set-Up Instructions

Step 1:

Bolt Valve Assembly, Part #18-300, onto cross member of boom using 3/8 x 1" bolts, lock washers and nuts (supplied).

Note: If boom has adjustable channel cross angle, use 3/8" adjustable channel nuts (supplied).

Step 2:

Install D.I.N. connectors from wiring loom using water resistant D.I.N. connector gasket and screws included in the 18-200 kit, to Motorized Valves and Pressure Regulator.

Note: If harness is supplied on the Service Vehicle, D.I.N. connector with 2-prong plug, Part # 18-321, is included in the 18-320 kit.

Step 3:

Plug 5/32" tubing into tubing adapter located next to valve #1.

Step 4:

Install ball valve and 3/4" hose barb adapter elbow (included in 18-300 kit), to pump outlet. Run 3/4" hose (cut to desired length), from pump to inlet on the Motorized Valve.

Step 5:

Remove 1" plug from return fitting on tank. Install 1" hose barb elbow to return fitting.

Step 6:

Install bypass return hose from 1" hose barb elbow on Motorized Valves to 1" elbow on tank.

Step 7:

Cut 3/4" hose to length and install from valves to boom inlet adapters (allow extra length on outer wing sections to allow for breakaway capabilities).

Step 8:

Install Control Box to Control Mount.

Using All Function Control Box, plug into socket located near glove box.

Step 9:

Install 5/32" tubing into adapter on Control Box.

Setting Pressure for Motorized Controls

The following instructions are designed to assist you with the proper setting and testing of your Motorized Control Unit.

For models with a diaphragm pump:

1. Shut off ball valve to boom.
2. Set manual relief valve to 70-80 PSI (*this is used mainly as a safety valve and will not operate below that pressure*).
3. Open ball valve to booms.

For all models (*for centrifugal pump models, the first three steps are not required*):

4. Close all three (3) **Metered Bypass Valves** (red knobs), by turning knobs in a clockwise direction as far as they will go (Figure 1).
5. Open all three (3) sections of the boom from the **Control Panel**. Set desired operating pressure using electric **Control Switch** on the **Control Panel**. To set the **Metered Bypass Valve**, close one (1) boom section at a time. Then open the **Metered Bypass Valve** for that boom section until the desired operating pressure is achieved.

Example: Desired pressure is 40 PSI - to set **Metered Bypass Valve:**

- A. Shut left boom section off on the Control Panel.
 - B. Pressure will read more than 40 PSI.
 - C. Using left Metered Bypass Valve, open valve until operating pressure returns to 40 PSI.
6. **Repeat** the above procedure for the **center and right boom sections**, making sure the other two (2) boom sections are open.

Motorized Control Valves:

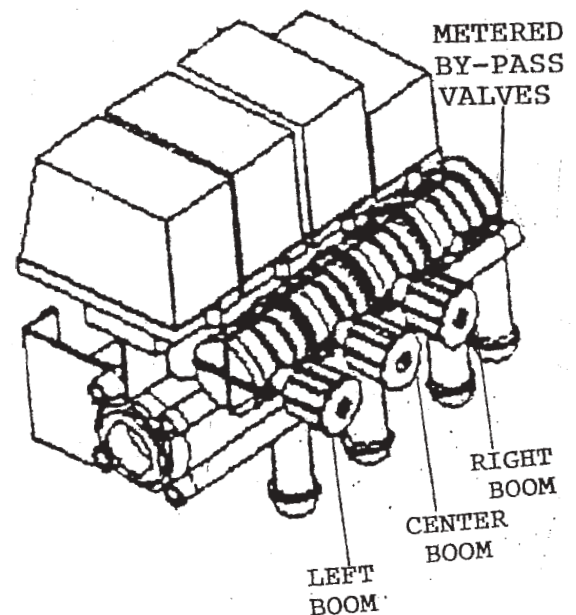
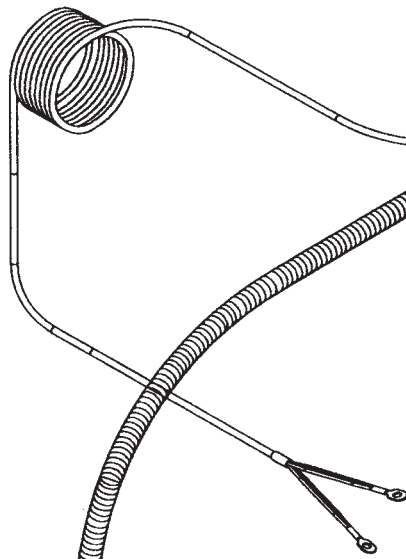
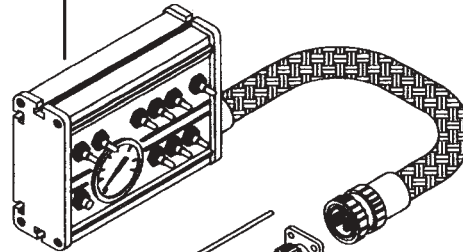


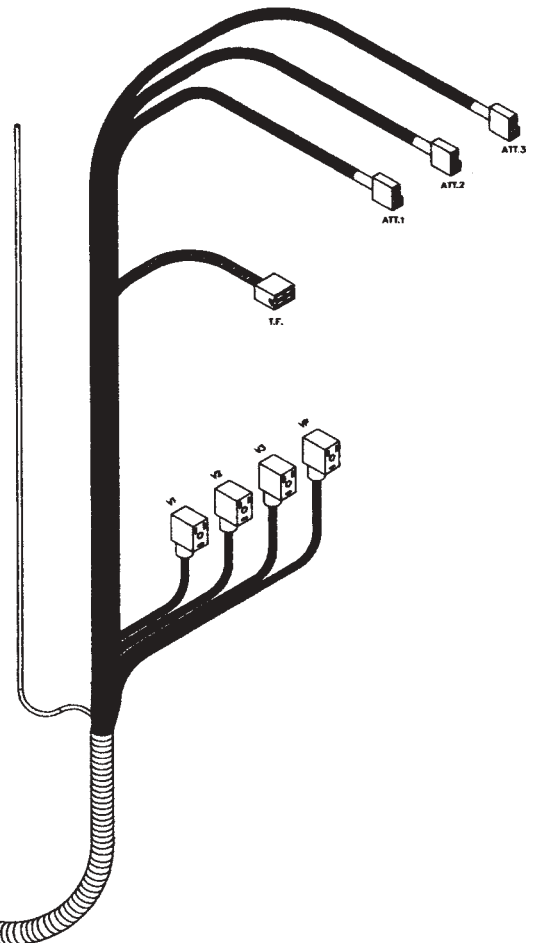
Figure 1

SDI Motorized Boom Valve Controls

56-503AF/1 - Control Box

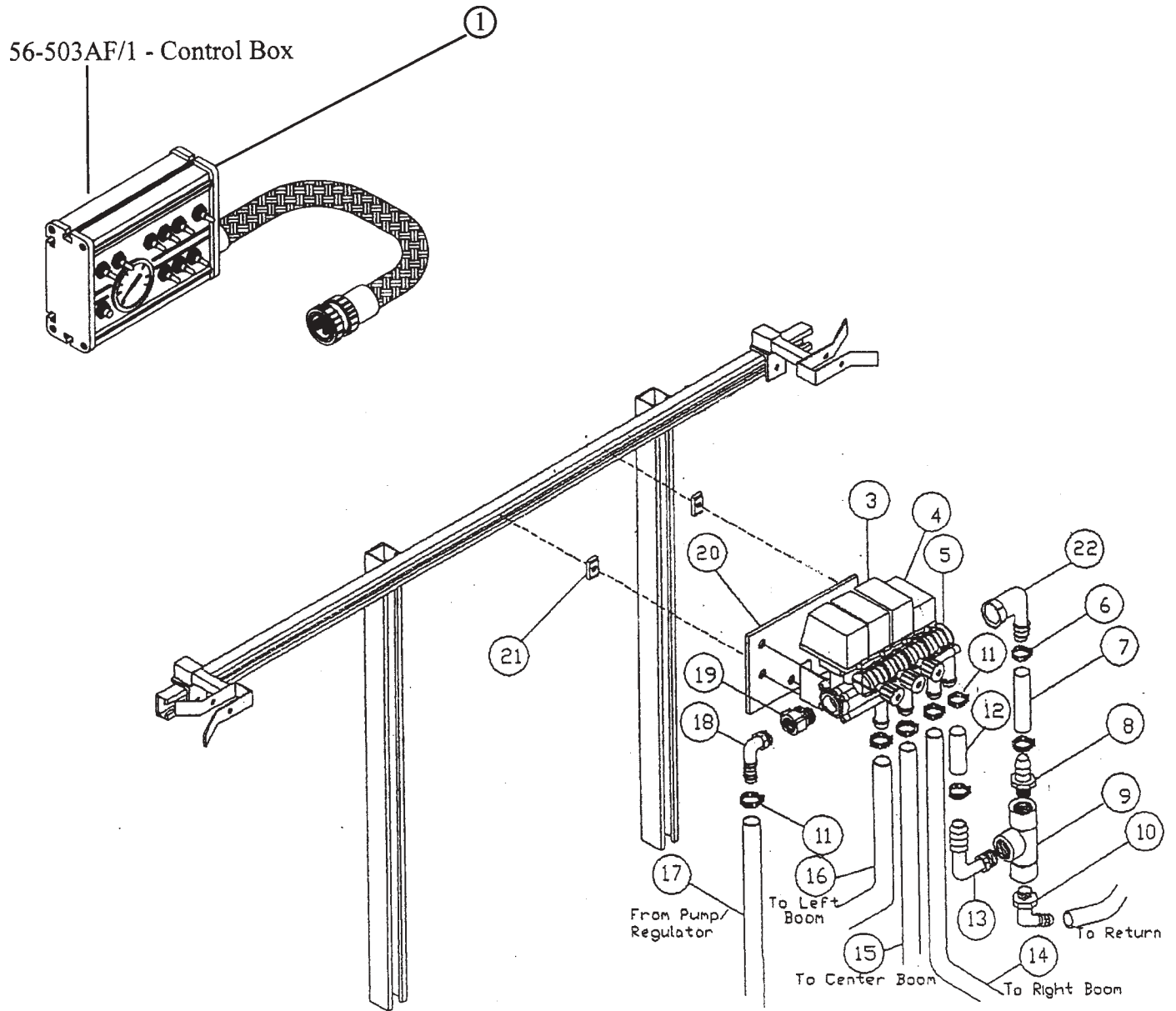


56-504AF
Cable



The 56-504AF Cable shown above is only used on the *EC-VMAFS Motorized Valves*

SDI Motorized Boom Valve Controls



SDI Motorized Boom Valve Controls

Item No.	Part No.	Description	Qty
1	56-503AF/1	Control Box	1
3	56-500	Three Motorized Valves	1
4	56-200	Pressure Regulating Valve	1
5	56-499	Metered Bypass	1
6	24-116	Clamp	6
7	21-938	Hose 1" ID, Per Foot	Specify
8	53-435	Adapter 1 MPT x 1" HB, Poly	1
9	53-826	Tee 1" NPT, Poly	1
10	52-120	Elbow 1 MPT x 1" HB, Poly	2
11	24-112	Hose Clamp #12	10
12	21-930	Hose 3/4" ID, Per Foot	Specify
13	52-119	Elbow 1 MPT x 3/4" HB, Poly	1
14	21-930	Hose 3/4" ID, Right Boom	**
15	21-930	Hose 3/4" ID, Center Boom	**
16	21-930	Hose 3/4" ID, Left Boom	**
17	21-930	Hose 3/4" ID, Pump	**
18	52-112	Elbow 3/4 MPT x 3/4" HB, Poly	1
19	56-2152	Adapter 3/4 MTP x 3/4 MPT x 1/8" Port	1
20	11-639	Mounting Plate	1
21	41-106	Strut Nut 3/8"	2
22	56-599	Elbow Slip x 3/4 In HB	1

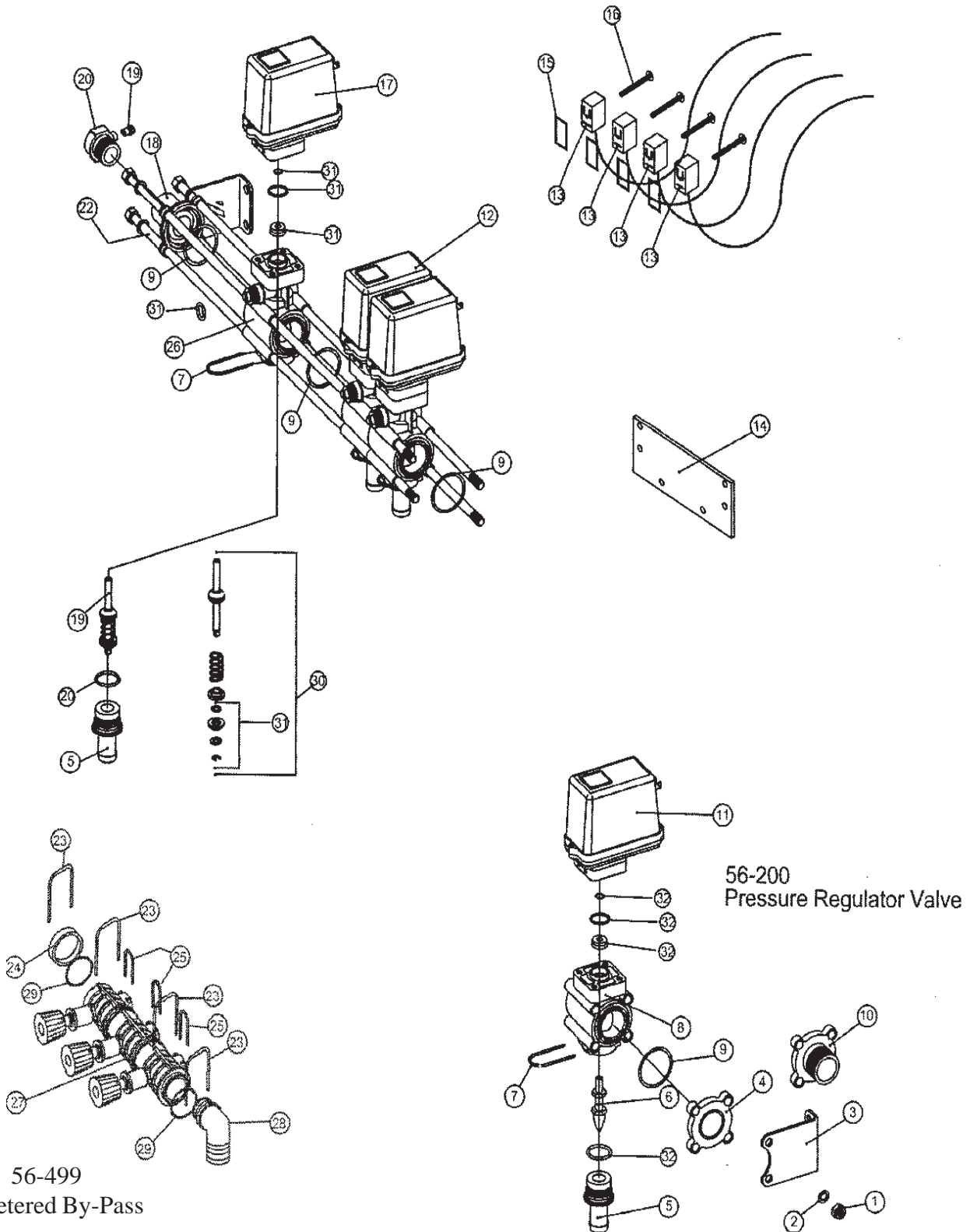
The following items are not illustrated:

11-021	Control Arm	1
11-022	Control Stand	1
11-023	Control Stand Clamp	1
21-938	Hose 1" ID, Per Foot	Specify

***NOTE** **Contact Jacobsen, a Textron Company for harness**

****Note** 25' of 21-930 3/4" ID hose included - cut to length required.

SDI Motorized Valve Bank Two Wire #56-500

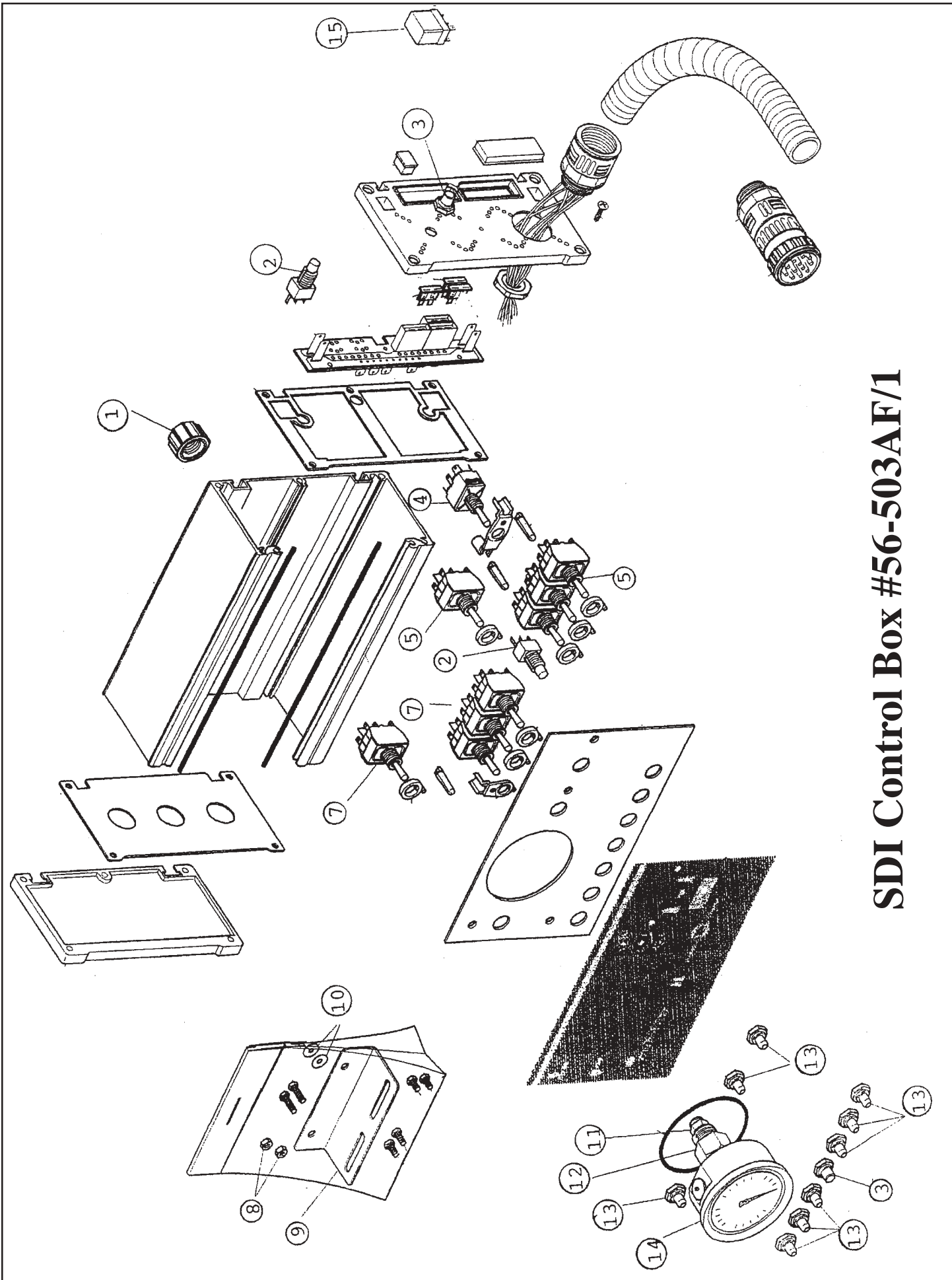


SDI Motorized Valve Bank Two Wire #56-500

Item No.	Part No.	Description	Qty
1	56-530	Hex Nut	4
2	56-529	Washer	8
3	56-505	End Mounting Plate	2
4	56-597	Blank Plate	1
5	56-105	3/4 In HB x Slip	4
6	56-203	Regulator Stem	1
7	56-106	Locking Pin	4
8		Regulator Valve Body included with #11	1
9	56-107	O-ring	5
10	56-514	Outlet Flange 3/4 In MPT	1
11	56-201	Regulator Motor Assembly	1
12	56-501	Valve Assembly, Two Wire	1
13	56-541	Din C onnector	4
14	11-369	SDI Mounting Plate	1
14	56-490	Gasket	4
16	56-491	Screw	4
17	56-100A	Motor Assembly for 56-501	3
18	56-513	Inlet Flange 3/4 In FPT	1
19	56-510	Adapter 1/8 MPT x 5/32 In Slip	1
20	56-2152	Adapter 3/4 MPT x 3/4 FPT x 1/8 In FPT	1
21	56-525	Motor Cover	4
22	56-528	Hex Bolt 10 In	4
23	56-596	Clip Pin	4
24	56-600	End Cap	1
25	56-517	Clip Pin	3
26	56-101	Valve Body	3
27	56-499	Metered By Pass after 1/07	1
28	56-599	Elbow Slip x 3/4 In HB	1
29	56-598	O-ring	4

Repair Kits:

30	56-538	Plunger Kit	1
31	56-539	Seal Kit	1
32	56-540	Seal Kit for Regulator Valve	1



SDI Control Box #56-503AF/1

SDI Complete Box Assembly #56-503AF/1

Item No.	Part No.	Description	Qty
1	61-527	Reducer 1/4 x 1/2"	1
2	61-531	Main Power Switch/Dual Foamer Switch	2
3	61-517	Main Power Boot	2
4	61-260	On/Off Switch	1
5	61-515	Boom Lift Pressure Switch	4
7	61-500	On/Off Boom Switch	4
8	61-606	Nut	2
9	61-525	Mounting Bracket	1
10	61-118	Washer	2
11	61-528	Tubing Connector 1/8"	1
12	61-535	Long Pressure Gauge Adapter	1
13	61-516	Switch Boot Toggle Switch	9
14	56-509	Liquid Pressure Gauge 0-100 PSI	1
15	61-530	Reley 12V 3AMP	1

