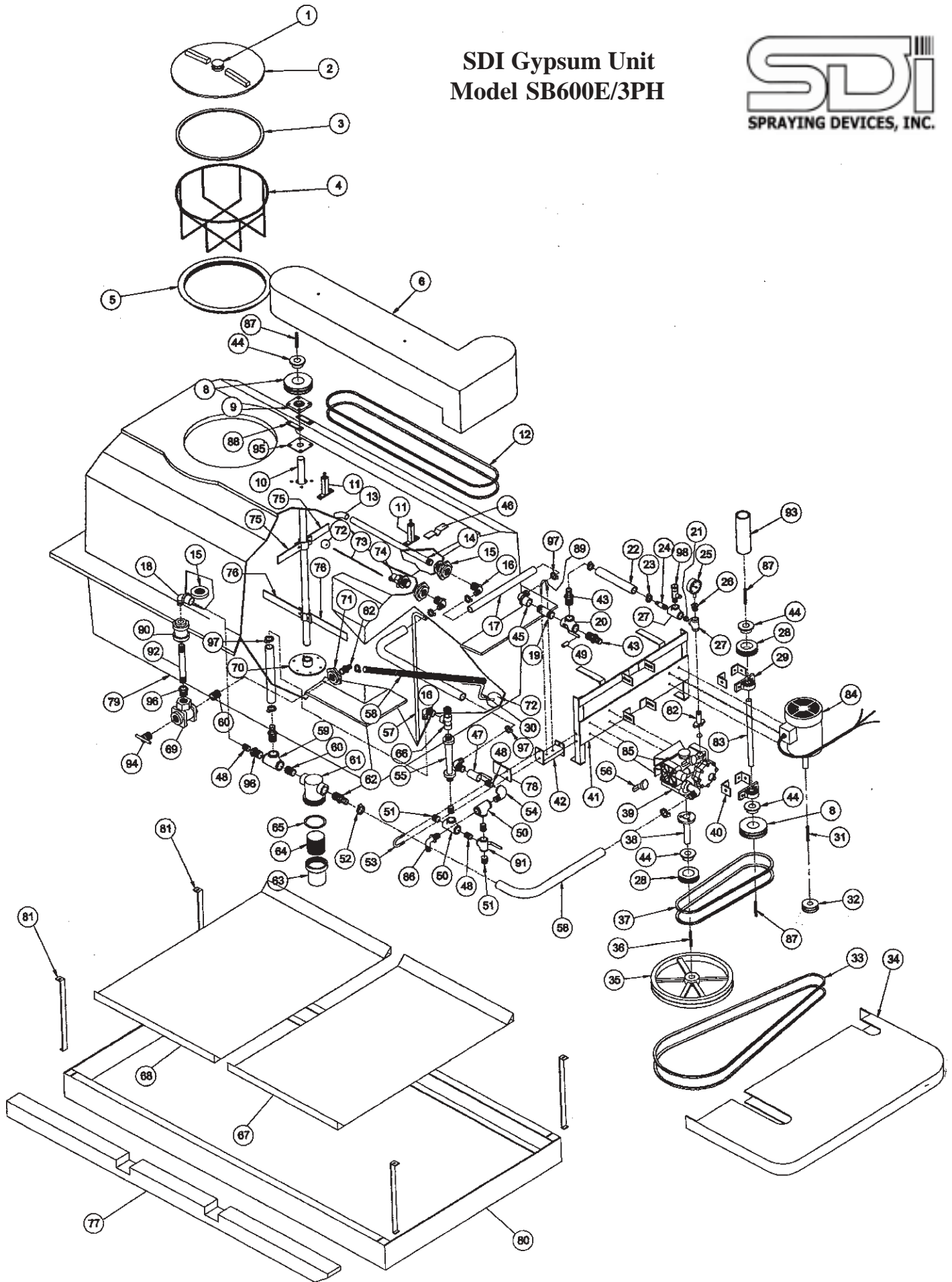


SDI Gypsum Unit Model SB600E/3PH



RevC/PI123/0311jj

SDI Gypsum Injection Unit SB600E/3PH

Item Number	Part Number	Description	Qty
1	15-056	Vent Assembly 16" Lid	1
2	15-053	16" Threaded Lid Only	1
3	15-055	C-Gasket 16" Lid	1
4	W16-203	Basket Strainer SS	1
5	15-054	16" Threaded Rim	1
	15-041	Complete Lid Assembly includes Items 1, 2, 3 and 5	
6	15-620	Top Belt Guard	1
8	66-145	Pulley 2GR 3V 6" O.D. x H Bushing	2
9	68-180	Flanged Bearing 1"	1
10	16-645	Agitator Shaft	1
11	11-873	Top Belt Guard Bracket	2
12	67-1060	Belt 3VX1060	2
13	52-275	Elbow 3/4" x 45° SxS PVC	1
14	53-925	Nipple 1 x 23" PVC TOE	1
15	16-116	Tank Fitting 1" DT 2" Hole, Poly	2
16	52-120	Elbow Adapter 3/4 MPT x 3/4" HB	2
17	21-931	Suction Hose 1" ID 300 PSI, Per Foot	Specify
18	53-813	Street Elbow 3/4" Poly	1
19	51-504SS	Nipple 3/4 x 4" SS	1
20	60-324-3B	Ball Valve 3/4" 3-Way Long Handle, Brass	1
21	51-401SS	Close Nipple 1/2" SS	1
22	81-500	Hose 1/2" ID 800 PSI Per Foot	Specify
23	24-106SS	Hose Clamp #12 SS	6
24	55-090SS	Adapter 1/2 MPT x 1/2" HB SS	1
25	27-600	Pressure Gauge 0-600 PSI	1
26	50-460SS	Bushing 1/2 MPT x 1/4" FPT	1
27	50-420SS	Tee 1/2" SS	2
28	66-204	Pulley 2GR 3V 4.12 x H Bushing	2
29	68-110	Pillow Block Bearing 1"	2
30	11-659	Suction Float Bracket Gypsum Units	1
31	46-032	Key 3/16 x 3/16 x 1-1/2"	1
32	66-229	Pulley 3.00 O.D. x 3/4" Bore 7/8"	1
33	67-670	Belt 3VX670	2
34	15-319	Bottom Belt Guard	1
35	66-214	Pulley 3GR 3V 14" O.D. x 1" Bore	1
36	46-250	Key 1/4 x 1/4 x 2-1/2"	1
37	67-355	Belt 3VX355	2
38	63-310	Pump Shaft 1"	1
39	9910-D30	Hypro Pump	1
40	11-872	Jack Shaft Bearing Mount	4
41	11-867	Pump/Motor Mount	1
42	11-871	Flow Meter Assembly Mount	1
43	53-137	Adapter 3/4 MPT x 1/2" HB Poly	2

SDI Gypsum Injection Unit SB600E/3PH

Item Number	Part Number	Description	Qty
44	66-081	Bushing H1 x 1" Bore	4
45	52-117	Elbow Adapter 3/4 FPT x 3/4" HB Poly	1
46	64-015	Support Return Line	1
47	60-324-3SST	Ball Valve 3/4" SS	1
48	51-501SS	Close Nipple 3/4" SS	5
49	11-864	Valve Handle Spacers	1
50	50-520SS	Tee 3/4" SS	2
51	50-580SS	Plug 3/4" SS	2
52	24-116SS	Hose Clamp #16 SS	5
53	47-102	U-Bolt 1/4 x 1 x 1-3/4"	2
54	50-510SS	Street Elbow 3/4" x 90° SS	1
55	79-011	Flow Meter F450N Series	1
56	16-279	Oil Sight Gauge Modified	1
57	11-035	Float Guide	1
58	21-930	Hose 3/4" ID 200 PSI, Per Foot	Specify
59	53-826	Tee 1" Poly	1
60	51-601SS	Close Nipple 1" SS	1
61	57-115	Strainer Body	1
62	53-435	Adapter 1 MPT x 1" HB Poly	2
63	57-117S	Solid Strainer Bowl	1
64	57-119	Strainer Screen 20 Mesh	1
65	57-116	Strainer Gasket	1
66	60-335	Globe Valve Angle 3/4"	1
67	10-652	Saddle Front	1
68	10-653	Saddle Rear	1
69	60-325-3PP	Ball Valve 1" 3-Way Side Load	1
70	11-351V	Agitator Shaft Bearing	1
71	16-115	Fitting 3/4 DT 1-5/8" Hole Poly	2
72	60-503	Float Balls 5"	2
73	60-504	Float Valve Stem	1
74	60-502	Float Valve Assembly	1
75	16-298	Left Agitator Paddle	2
76	16-300	Left Bottom Agitator Paddle	2
77	75-928	Gypsum Runner	2
78	11-891	Support Strainer	1
79	15-602WH/R	Tank	1
80	10-603	Frame	1
81	10-501	Hold Down Strap	4
82	17-150	Discharge Flange	1
83	63-217	Jack Shaft 1 x 17"	1
84	20-096	Motor 2HP 3PH 1750 RPM	1
85	11-251	Pump Mount	2
86	52-112	Elbow Adapter 3/4 MPT x 3/4" HB Poly	5
87	46-150	Key 1/4 x 1/4 x 1-1/2"	3

SDI Gypsum Injection Unit SB600E/3PH

Item Number	Part Number	Description	Qty
88	11-875	Spacer 68-180 Flanged Bearing	2
89	47-205	U-Bolt 5/16 x 1-3/4 x 2-11/16"	1
90	60-354	Ball Check Valve 3/4"	1
91	60-324	Ball Valve 3/4" HD Full Port	1
92	53-906	Pipe Nipple 3/4 x 6" PVC	1
93	15-455	Guard, Jack Shaft	1
94	11-353	Tee Handle Pipe Plug 1" SS	1
95		Rubber Gasket 1/8" Thick	1
96	50-663SS	Bushing 1 MPT x 3/4" FPT SS	2
97	24-112SS	Hose Clamp #12 SS	6
98	60-415	Safety Valve 280 PSI 53GPM	1
		<i>The following items are not illustrated:</i>	
	64-034	White Vinyl Trim, Per Foot	Specify
	70-005	The Phertigator by SDI Decal	2
	70-104	SDI Logo Decal	1
	70-114	Warning for Guards Decal	2
	70-301	Caution Decal 1 - 8	1
	70-357	SDI Serial and Model Number Decal	1