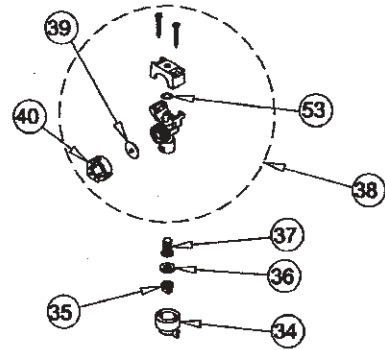
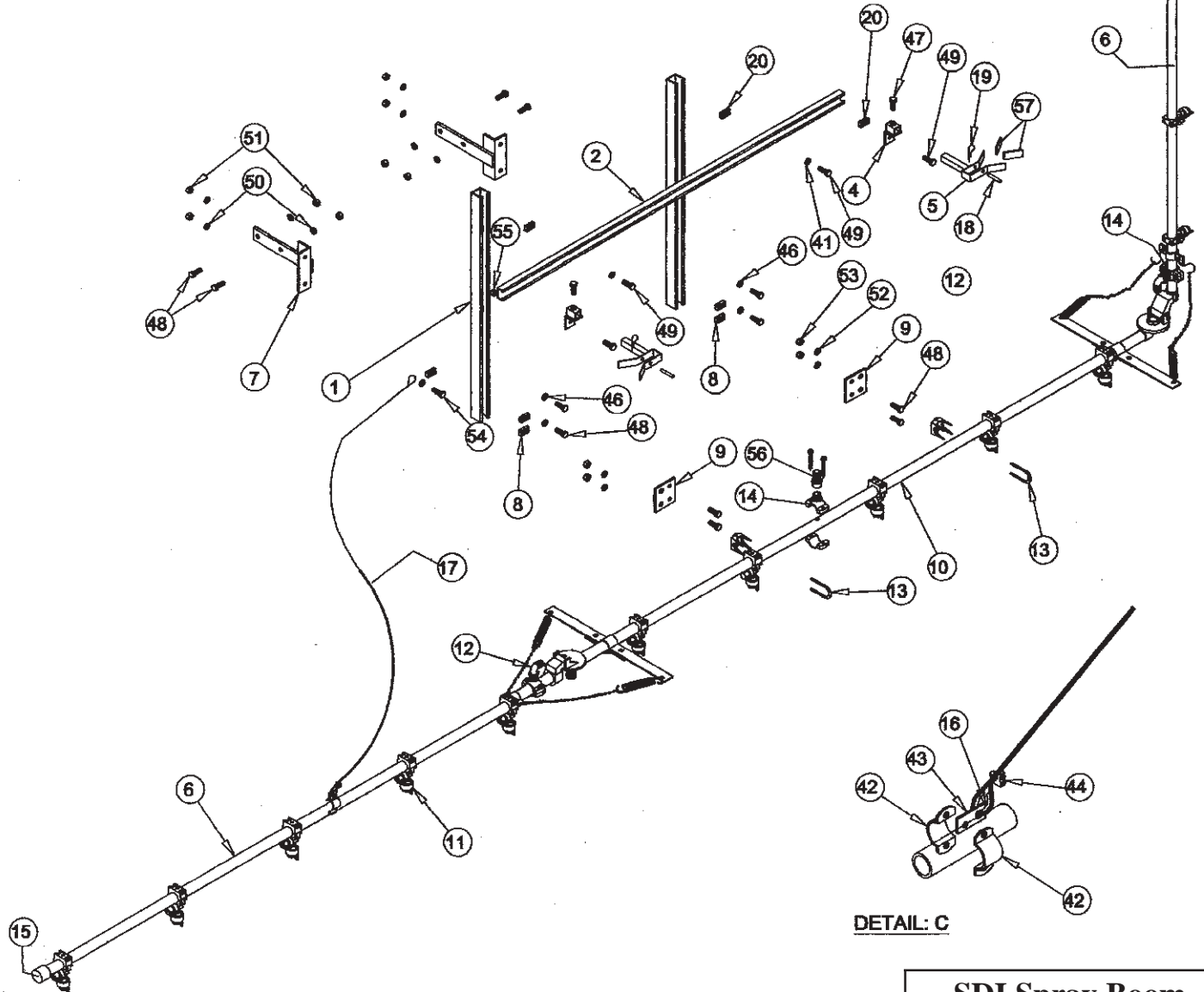


DETAIL: B



DETAIL: A



DETAIL: C

SDI Spray Boom

| Item Number | Part Number | Description | Qty |
|-------------|-------------------|---|---------|
| | SB 25/20-1 | 25' Spray Boom 15 Nozzles on 20" Centers | |
| 1 | 11-212 | Channel Upright | 1 |
| 2 | 11-213-92 | Cross Member | 1 |
| 4 | 11-214 | Boom Rest Mount | 2 |
| 5 | 11-218-1 | Boom Rest | 2 |
| 6 | 51-594 | Right and/or left boom pipe | 2 |
| 7 | 11-215 | Boom Mount | 2 |
| 8 | 41-110 | Strut Nut 1/2" NC | 4 |
| 9 | 11-216 | Center Section Mounting Plate | 2 |
| 10 | 51-588 | Center Boom Pipe | 1 |
| 11 | 64-411 | Single Nozzle Body | 15 |
| 12 | 53-092 | Elbow Adapter 1/2 FPT x 3/4" HB Poly | 2 |
| 13 | 24-441 | Boom Clamp | 2 |
| 14 | 52-418 | Pipe Saddle 1/2" MPT Poly | 3 |
| 15 | 52-582 | Threaded Cap | 2 |
| 16 | 69-220 | Cable Thimble 3/16" | 4 |
| 17 | 69-300 | Swag Cable Assembly 60" | 2 |
| 18 | 80-105 | Locking Pin | 2 |
| 19 | 48-301 | Hair Pin | 2 |
| 20 | 41-106 | Strut Nut 3/8" | 2 |
| 21 | 45-186 | Boom Return Spring | 4 |
| 22 | 69-910 | Chain #40, Per Foot | Specify |
| 23 | 41-512 | Nylon Lock Nut 5/16" NC | 2 |
| 25 | 41-125 | Castle Nut 5/8" NF | 2 |
| 26 | 45-180 | Boom Tension Spring | 2 |
| 27 | 64-281 | Special Clamp Assembly | 2 |
| 28 | 11-285 | Three Part Hinge Assembly | 1 |
| 29 | 31-112 | Boom Hinge Bolt 5/16 NC x 3-1/4" | 2 |
| 30 | 35-117 | Boom Pivot Bolt 5/8 NF x 4-1/2" | 2 |
| 32 | 11-168 | Top Spring Bracket | 2 |
| 33 | 11-169 | Bottom Spring Bracket | 2 |
| 34 | 64-406 | Black Cap | 15 |
| 35 | 64-643 | Spray Tip TP8003VP | 15 |
| 36 | 64-404 | Washer | 15 |
| 37 | 64-403 | Strainer | 15 |
| 38 | 64-411 | Split Eyelet Check Valve | 15 |
| 39 | 64-414 | Diaphragm | 15 |
| 40 | 64-415 | Check Valve | 15 |
| 41 | 42-503 | Flat Washer 3/8" SST | 6 |
| 42 | 64-280 | Split Eyelet Clamp | 4 |
| 43 | 11-104 | Anchor Plate | 2 |
| 44 | 24-401 | Cable Clamp | 2 |
| 45 | 69-238 | S-Hook | 4 |

SDI Spray Boom

| Item Number | Part Number | Description | Qty |
|-------------|-------------|---------------------------------|-----|
| 46 | 42-104 | Flat Washer 1/2" SAE Plated | 4 |
| 47 | 31-503 | Hex Bolt 5/16 NC x 1" SST | 4 |
| 48 | 34-104 | Hex Bolt 1/2 NC x 1-1/4" Plated | 12 |
| 49 | 32-102SS | Hex Bolt 3/8 NC x 3/4" SST | 2 |
| 50 | 43-104 | Lock Washer 1/2" NC | 8 |
| 51 | 41-104 | Hex Nut 1/2" NC Plated | 8 |
| 52 | 43-105 | Lock Washer 5/8" Plated | 4 |
| 53 | 64-416 | Nozzle Body O-ring | 11 |
| 54 | 32-503 | Hex Bolt 3/8 NC x 1" SST | 2 |
| 55 | 41-503 | Hex Nut 3/8" NC SST | 2 |
| 56 | 52-110 | Adapter 1/2 FPT x 3/4" HB | 1 |
| 57 | 69-025 | Boom Fork Flat Grips | 4 |