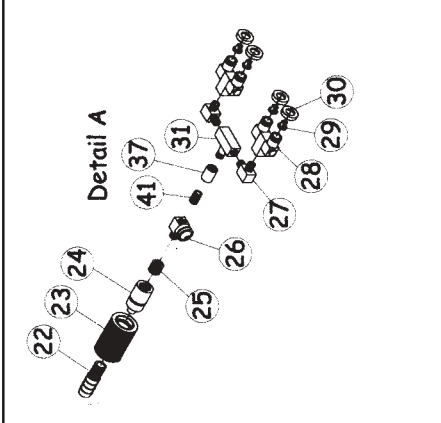
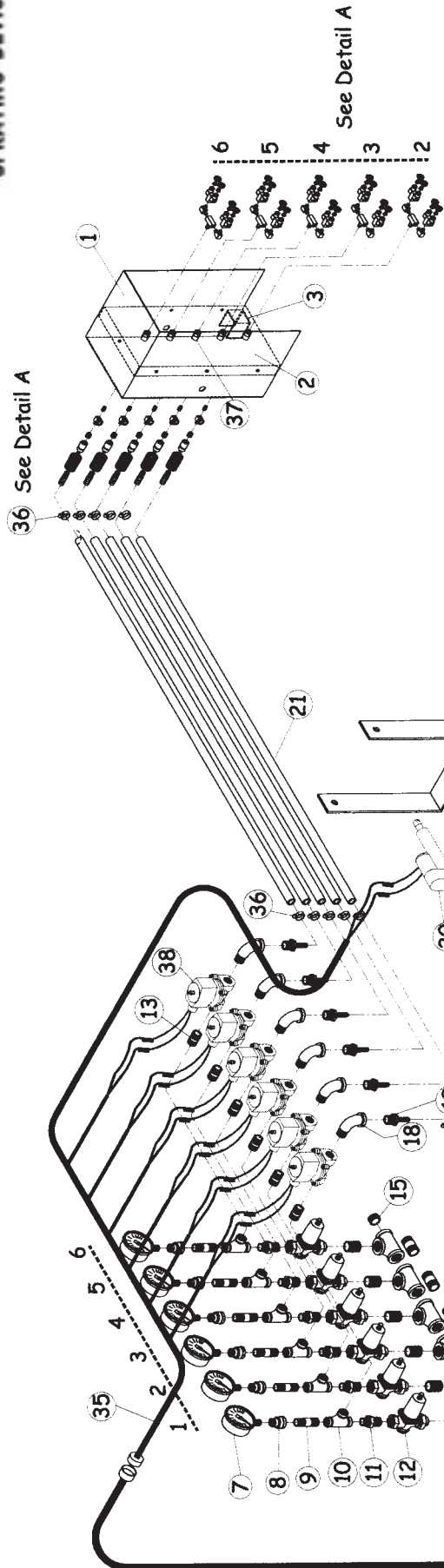


**TT630 SDI Boomless
Head Assembly**

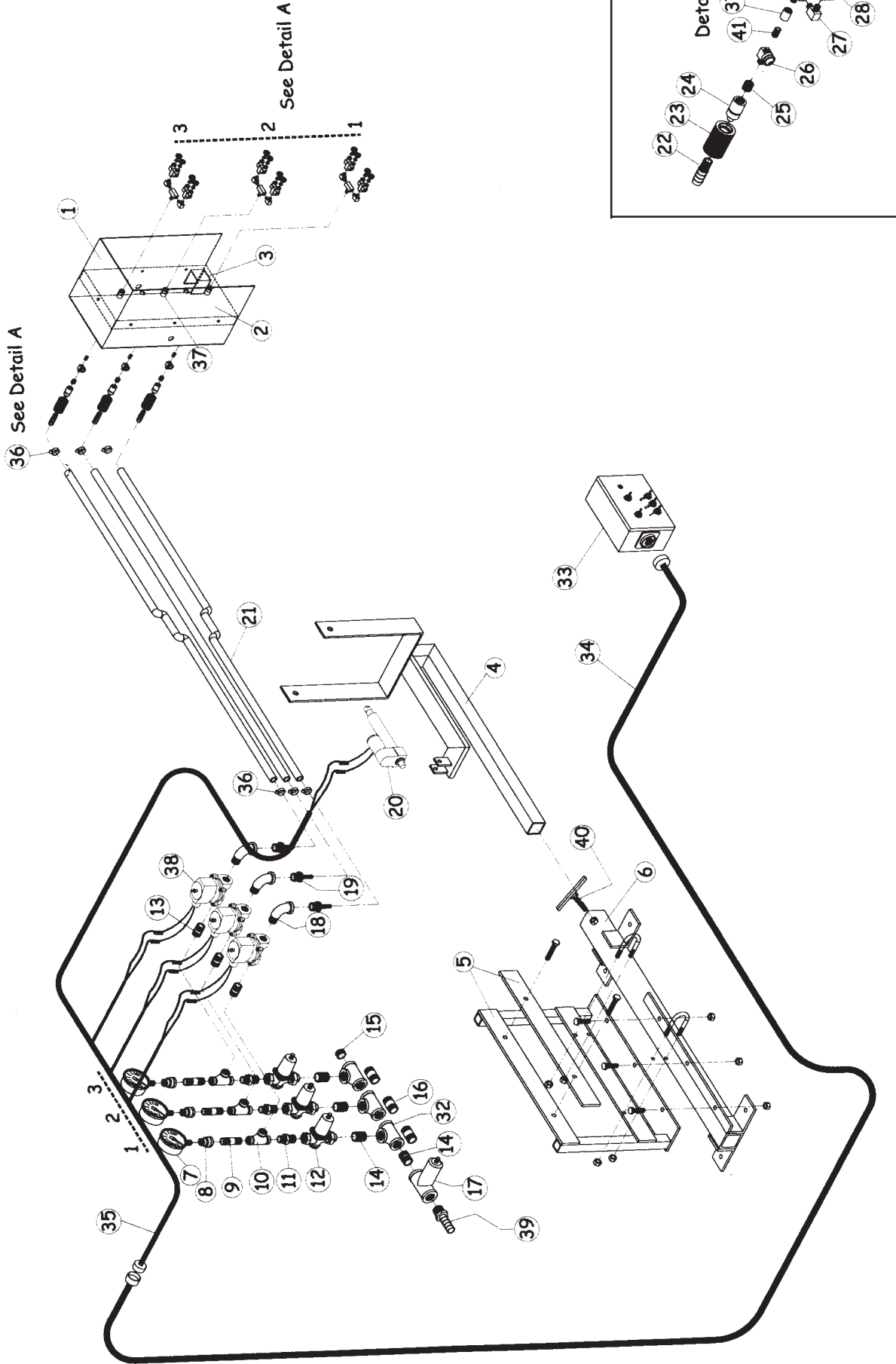


Spraying Devices, Inc. • P O Box 3107 Visalia CA 93278 USA • Tel: 559-SDI-5555 • Fax: 559-SDI-5591
email: sales@sprayingdevices.com

SDI Boomless Head Assembly Model TT630

Item Number	Part Number	Description	Qty
1	11-8001	Outside Box	1
2	11-8002	Insert	1
3	11-8003	Actuator U-Bracket	1
4	11-8004	Actuator Mount Sliding Box	1
5	11-8006	Plumbing Mount	1
6	11-8007	Main Bracket Mount, 30"	1
7	27-100	Liquid Filled Gauge 0-100 PSI	6
8	50-454B	Bell Reducer 1/2 x 1/4" Brass	6
9	51-402B	Pipe Nipple 1/2 x 2" Brass	6
10	50-420B	Tee 1/2" Brass	6
11	50-561B	Bushing 3/4 x 1/2" Brass	6
12	60-770	Pressure Reducing Valve	6
13	51-401B	Close Nipple 1/2" Brass	6
14	51-501B	Close Nipple 3/4" Brass	7
15	50-580B	Plug 3/4" Brass	1
16	51-502B	Pipe Nipple 3/4 x 2" Brass	6
17	57-100	Strainer 3/4" Inlet-Outlet Brass	1
18	50-410B	Street Elbow 1/2" x 90° Brass	6
19	55-091	Adapter 1/2 MPT x 3/8" HB Brass	6
20	20-0561	Electric AEI Linear Actuator	1
21	81-375	Spray Hose 3/8" 800 PSI	31
22	55-083	Adapter 3/8 MPT x 3/8" HB Brass	5
23	52-355	Quick Coupling Body	6
24	52-356	Quick Coupling Nipple	6
25	50-360B	Bushing 3/8 MPT x 1/4" FPT Brass	5
26	64-500	Check Valve	5
27	50-213B	Elbow 1/4 MPT x 1/4" MPT Brass	10
28	64-270	Double Swivel 1/4" FPT Brass	10
29	64-0005	Spray Tip SST	16
29	64-1505	Spray Tip SST	4
30	64-318	Cap, Short Brass	20
31	50-225B	Tee 1/4 FPT x 1/4 MPT x 1/4" FPT Brass	5
32	50-520B	Tee 3/4" Brass	6
33	65-300	Control Box	1
34	65-400	Harness 16' 10"	1
35	65-410	Harness 2'	1
36	24-106	Hose Clamp #6	12
37	50-250SS	Coupling 1/4" SST	5
38	60-430	Solenoid Valve	6
39	55-103-1	Adapter 3/4 MPT x 3/4" HB Brass	1
40	45-230	Set Screw 1/3" W/Tee Handle	1
41	51-242	Close Nipple 1/4" SST	5

**TT330 SDI Boomless
 Head Assembly**



Spraying Devices, Inc. • P O Box 3107 Visalia CA 93278 USA • Tel: 559-SDI-5555 • Fax: 559-SDI-5591
 email: sales@sprayingdevices.com

SDI Boomless Head Assembly Model TT330

Item Number	Part Number	Description	Qty
1	11-8001	Outside Box	1
2	11-8002	Insert	1
3	11-8003	Actuator U-Bracket	1
4	11-8004	Actuator Mount Sliding Box	1
5	11-8008	Plumbing Mount	1
6	11-8007	Main Bracket Mount, 30"	1
7	27-100	Liquid Filled Gauge 0-100 PSI	3
8	50-454B	Bell Reducer 1/2 x 1/4" Brass	3
9	51-402B	Pipe Nipple 1/2 x 2" Brass	3
10	50-420B	Tee 1/2" Brass	3
11	50-561B	Bushing 3/4 x 1/2" Brass	3
12	60-770	Pressure Reducing Valve	3
13	51-401B	Close Nipple 1/2" Brass	3
14	51-501B	Close Nipple 3/4" Brass	4
15	50-580B	Plug 3/4" Brass	1
16	51-502B	Pipe Nipple 3/4 x 2" Brass	3
17	57-100	Strainer 3/4" Inlet-Outlet Brass	1
18	50-410B	Street Elbow 1/2" x 90° Brass	3
19	55-091	Adapter 1/2 MPT x 3/8" HB Brass	3
20	20-0561	Electric AEI Linear Actuator	1
21	81-375	Spray Hose 3/8" 800 PSI, Per Foot	5.25
22	55-083	Adapter 3/8 MPT x 3/8" HB Brass	3
23	52-355	Quick Coupling Body	3
24	52-356	Quick Coupling Nipple	3
25	50-360B	Bushing 3/8 MPT x 1/4" FPT Brass	3
26	64-500	Check Valve	3
27	50-213B	Elbow 1/4 MPT x 1/4" MPT Brass	6
28	64-270	Double Swivel 1/4" FPT Brass	6
29	64-0005	Spray Tip SST	8
29	64-1505	Spray Tip SST	4
30	64-318	Cap, Short Brass	12
31	50-225B	Tee 1/4 FPT x 1/4 MPT x 1/4" FPT Brass	3
32	50-520B	Tee 3/4" Brass	3
33	65-300	Control Box	1
34	65-400	Harness 16' 10"	1
35	65-410	Harness 2'	1
36	24-106	Hose Clamp #6	6
37	50-250SS	Coupling 1/4" SST	5
38	60-430	Solenoid Valve	3
39	55-103-1	Adapter 3/4 MPT x 3/4" HB Brass	1
40	45-230	Set Screw 1/3" W/Tee Handle	1
41	51-242	Close Nipple 1/4" SST	3