



# Turf N' Tree Sprayers

***Established in 1982, Spraying Devices Inc. has a long history of building quality, long lasting, commercial grade power spraying equipment. The SDI Turf N' Tree Sprayer is a true multi-application sprayer. Use it with a boom for spraying turf at lower spray pressures. Or use it for spraying trees and enjoy over 50 feet of high pressure vertical reach.***



## Features:

- Durable, commercial grade, color impregnated fiberglass tanks in 100, 160, 200, 300, 500 and 600 gallon sizes with anti surge baffles in 300 gallon and larger tanks
- Honda GX™ or Kohler® Command Pro Gas Engine and a Comet® diaphragm pump are standard equipment

(other pump and engine combinations are available)



TM500 with Tandem Axle Highway Trailer

- Lubrication free, stainless steel, belt driven mechanical agitation system (venturi jet agitation can be substituted if desired)
- Screw-in lid assembly with pillow gasket designed to eliminate leaks
- External liquid level sight gauge calibrated in gallons
- Pressure regulating valve includes a liquid filled pressure gauge
- Welded steel, epoxy coated frames
- Non-corrosive brass, stainless steel and polyethylene plumbing fittings

- Trailer packages with standard, turf, high flotation or highway wheels and tires are available
- Spray booms, hose reels, boom controls and spray guns are just a few of the many sprayer accessories that we offer



200 Gallon with High Flotation Trailer Package



TM200 Skid with Side Mount Hose Reel

The **SDI Turf N' Tree** sprayer combines your choice of a Honda GX™ or Kohler® Command Pro engine with a 20 gpm Comet® diaphragm pump. This package gives you the dependability, efficiency, economy and pumping characteristics that will fit the majority of your needs.



Kohler® engine and Comet® Pump

With this standard pump and engine combination get volume and pressure needed for both boom spraying and hand gun use. We can customize the pump and engine to fit your needs.

The three piston, triple diaphragm pump is designed for long life, low maintenance and the ability to efficiently move a wide

range of liquids with various viscosities.



TM100 with available Turf Trailer Package and Accessories

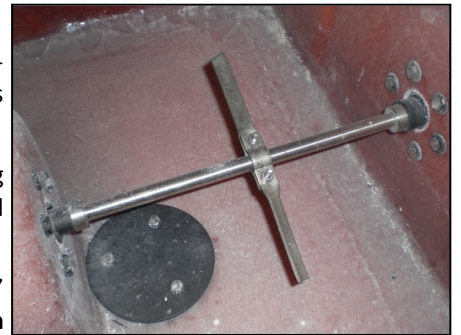
The pressure regulating valve has a micrometer style knob and liquid filled pressure gauge to accurately adjust to high or low spraying pressures. It also features a “quick-unload” feature for easy engine starting.



Liquid Filled Pressure Gauge & Regulator

**SDI Turf N' Tree** Sprayers are constructed with durable, color impregnated fiberglass tanks mounted on welded, epoxy coated frames. Fiberglass tanks offer the maximum in durability and versatility. If desired, you can also have the larger tanks split into multiple compartments allowing you to spray more than just one material. All tanks are sloped and have sumps to insure complete drainage.

Our tanks have a screw in lid assembly with pillow gasket designed to eliminate leaks. Tanks 300 gallons and larger include anti-surge baffles.



Stainless Steel Agitation System

The non-corrosive Stainless Steel mechanical agitation system rotates on self-lubricating bearings. A venturi-jet agitation system can be substituted. The anti-vortex plate located over the suction insures a consistent flow of material.

Our trailer packages are available in a variety of styles; **Standard** (bolt on axle and 15” wheels and tires), **Turf** (bolt-on axle and 18x8.5x8 turf flotation wheels and tires), **High Flotation** with 11L x 15 implement tires or our **Highway** (2” ball hitch, springs, fenders and light kit) with highway tires.

We offer a variety of accessories including hose reels, spray booms, boom controls, spray hose and spray guns.

***Turf N' Tree from SDI, the only sprayer you will ever need!***



TM500 with Highway Trailer



TM100 with Highway Trailer & Vertical Hose Reel

Spraying Devices Inc. • 447 E. Caldwell Ave • Visalia, CA 93277

(559)734-5555 • [www.sprayingdevices.com](http://www.sprayingdevices.com)