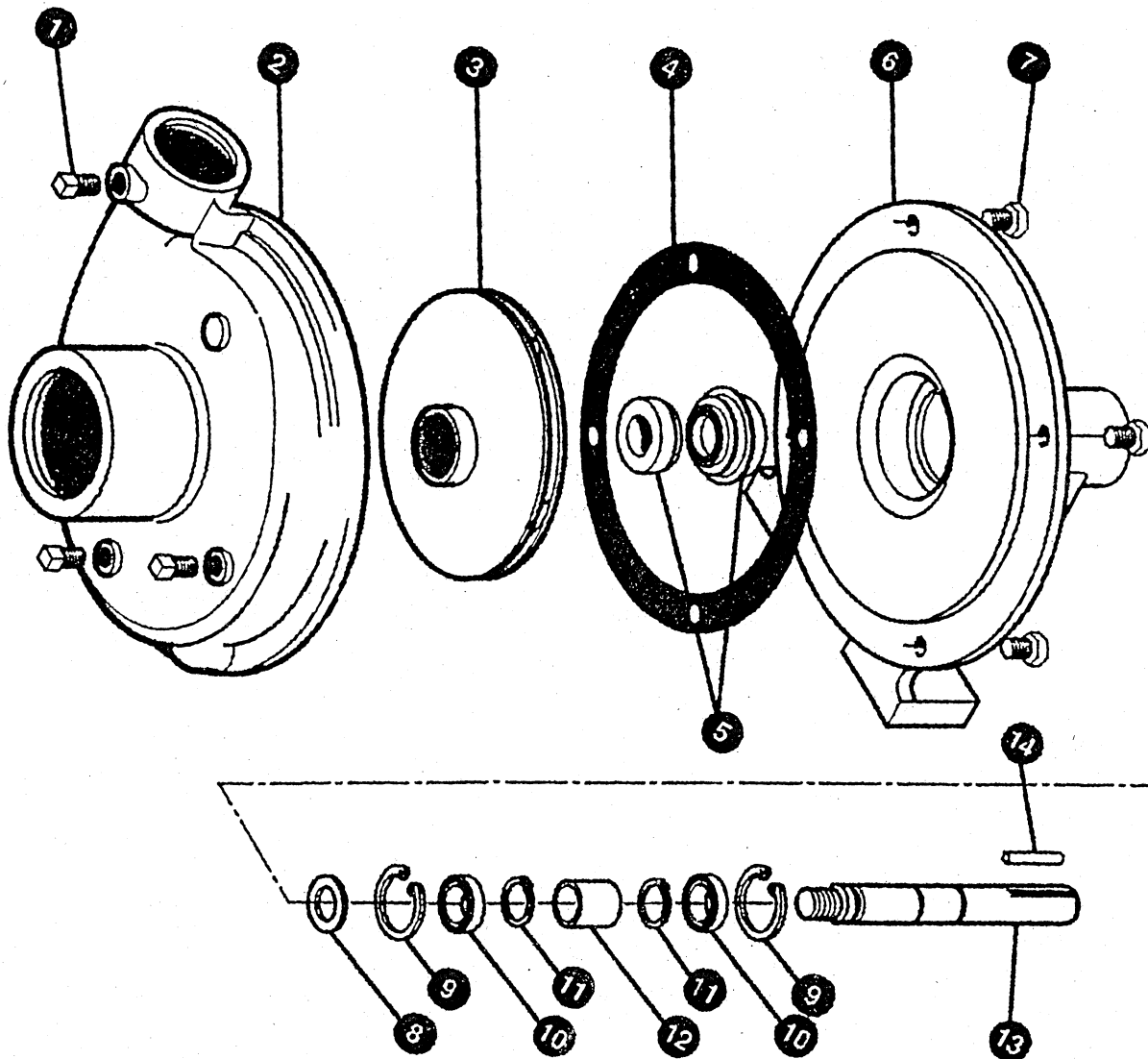


## MODEL 19-200 CENTRIFUGAL PUMP



## Centrifugal Pump/Pedestal Mount

Item Number	Part Number	Description	QTY
	<b>19-200</b>	<b>Centrifugal Pump</b>	
1	77-221	Pipe Plug	3
2	77-209	Volute 1-1/4" x 1"	1
3	77-226	Impeller	1
4	77-203	Gasket, 4-Hole	1
5	*77-207	Seal, Viton	1
5	*77-207SC	Seal, Silicone Carbide	1
6	77-227	Mounting Frame	1
7	77-228	Cap Screw 3/8 x 3/4", NC	4
8	77-222	Slinger	1
9	77-218	Snap Ring, Internal	2
10	77-219	Ball Bearing	2
11	77-216	Snap Ring, External	2
12	77-217	Spacer	1
13	77-229	Shaft 5/8"	1
14	77-230	Shaft Key	1
<p>*All 19-200 Pumps Manufactured prior to August 1999, are furnished with the 77-207 Viton Seal. All Pumps Manufactured after August 1999, are furnished with the 77-207SC Silicone Carbide Seal.</p> <p>Pumps manufactured after August 1999, will be affixed with a metal tag indicating "SC".</p>			