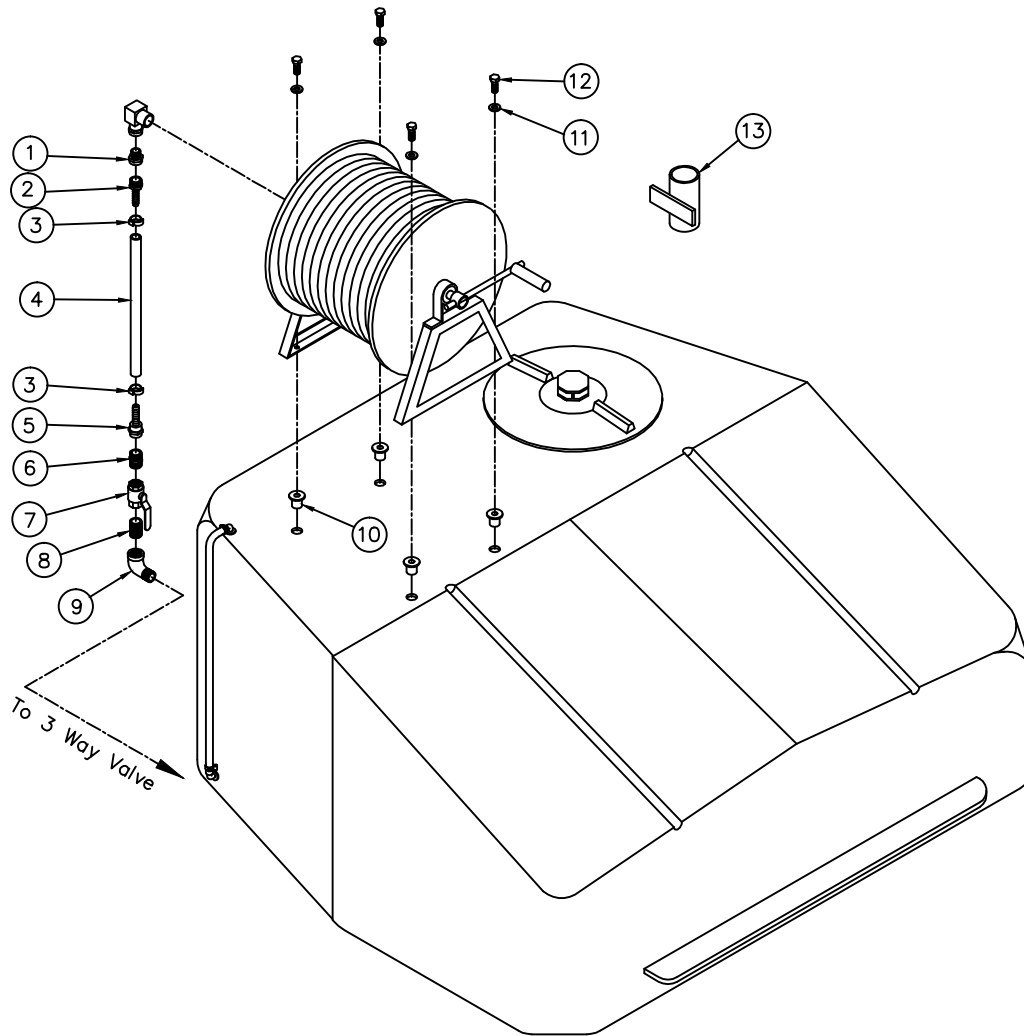


Item#	Part#	Description	Qty.
1	55-107	Adapter 1/2 MPT X 3/4"FGHT	1
2	55-212	Coupling Hose Male 1/2"HB	1
3	24-203	Hose Clamp Bandit JS203	2
4	81-500	Spray Hose 1/2"ID. 800 PSI	37"
5	55-211	Coupling Hose Female 1/2"HB	1
6	55-108	Adapter 3/4 MPT X 3/4 MGHT	1
7	60-324	3/4" Ball Valve	1
8	51-501SS	Close Nipple 3/4"SST	1
9	50-510SS	Elbow Street 3/4"SST	1
10	41-450	Well Nut 3/8" NC	4
11	42-706	Washer Fender 3/8"NC SST	4
12	32-504	Bolt Hex 3/8"X 1 1/4"NC SST	4
13	11-401	Gun Holder	1

  
 Spraying Devices, Inc.



#### Mounting Instructions:

1. Mounting hole dimensions are approximate, If another location is desired place the hose reel in the desired location on the tank and mark the hole locations.
2. Drill (4) 3/4" holes in tank to match the hose reel.
3. Insert the well nuts through each hole.
4. Line up the holes in the hose reel base with the holes you have drilled in the tank and bolt into place.
5. Install additional plumbing and connect hose to hose reel.
6. Install the gun holder in a convenient location.