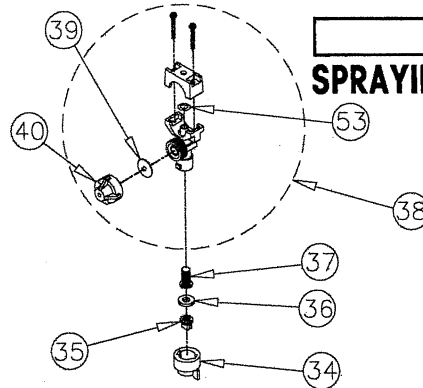
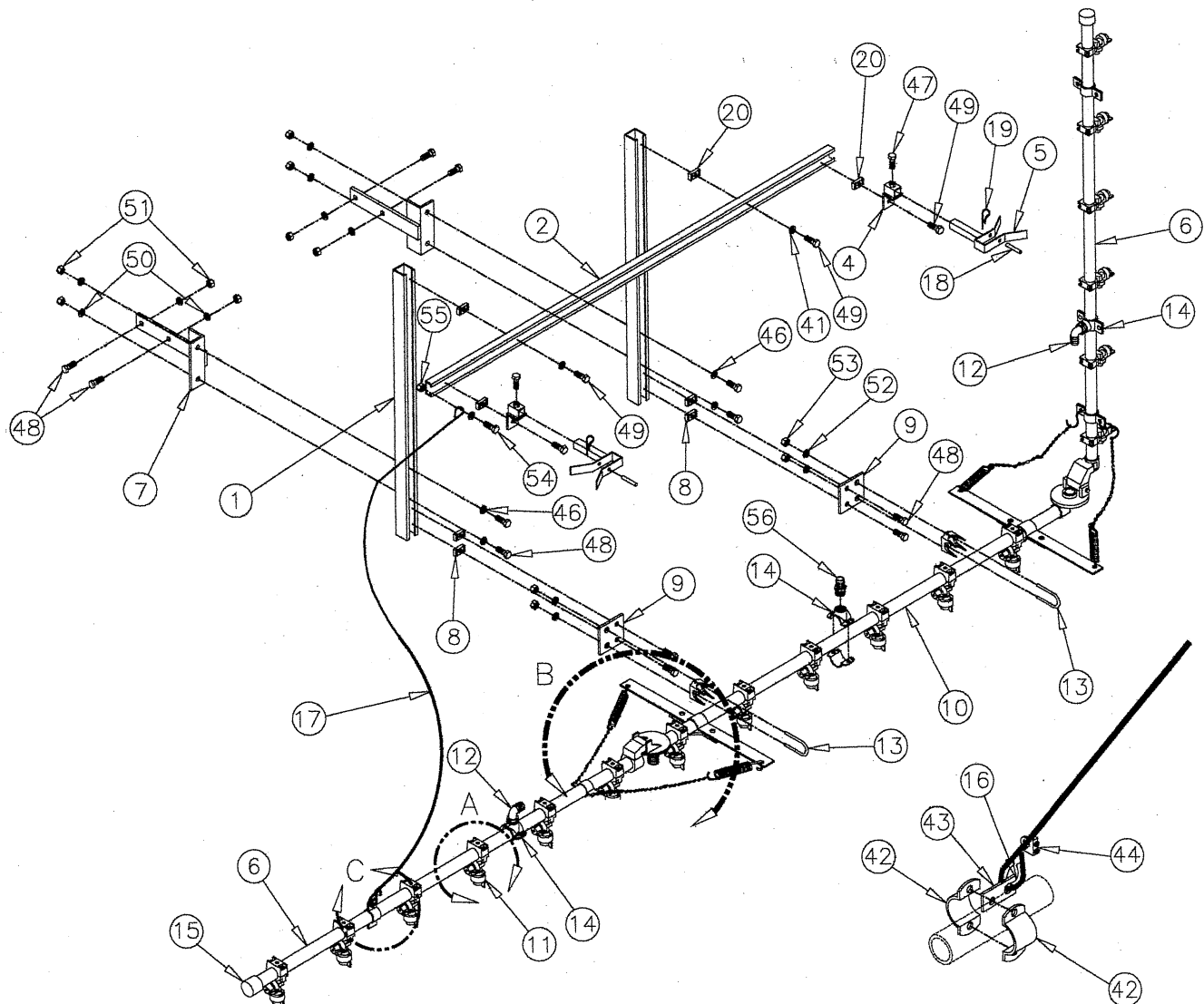


DETAIL: B



DETAIL: A



DETAIL: C

**SDI Economy Wet Spray  
Booms 15'/10", 15'/20", 20'/20"**

PI137/301jj

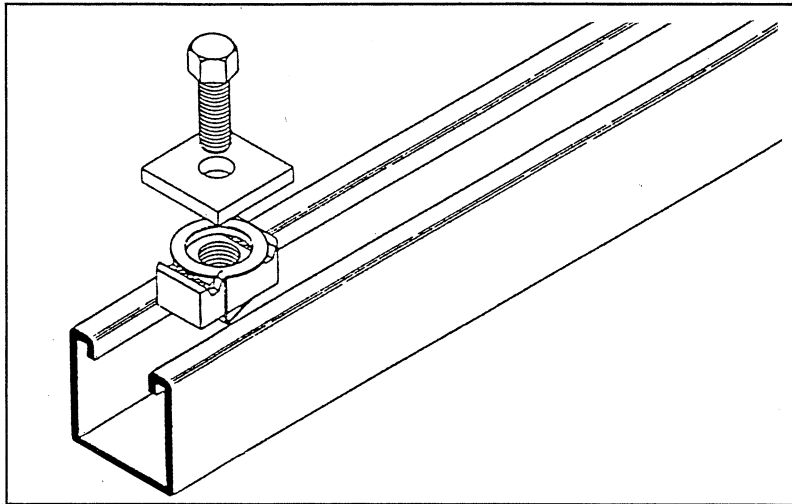
## SDI Economy Booms

Item Number	Part Number	Description	QTY
		<b>15' Wet Boom, 9 Nozzles on 20" Centers</b>	
		<b>15' Wet Boom, 18 Nozzles on 10" Centers</b>	
		<b>20' Wet Boom, 12 Nozzles on 20" Centers</b>	
1	11-212	Channel Upright	2
2	11-213-60	Cross Member for 15'/10" Spacing & 15'/20" Spacing	1
2	11-213-72	Cross Member for 20'/20" Spacing	1
4	11-214	Boom Rest Mount	2
5	11-218-1	Boom Rest	2
6	51-555	Right and/or left Boom Pipe for 15'/10" Spacing	2
6	51-556	Right and/or left Boom Pipe for 15'/20" Spacing	2
6	51-574	Right and/or left Boom Pipe for 20'/20" Spacing	2
7	11-215	Boom Mount	2
8	41-110	1/2" Strut Nut, NC	4
9	11-216	Center Section Mounting Plate	2
10	51-547	Center Boom Pipe for 15'/10" Spacing	1
10	51-548	Center Boom Pipe for 15'/20" Spacing	1
10	51-567	Center Boom Pipe for 20'/20" Spacing	1
11	64-397	Spray Tip Assembly for 15'/10" Spacing	18
11	64-397	Spray Tip Assembly for 15'/20" Spacing	9
11	64-397	Spray Tip Assembly for 20'/20" Spacing	12
12	53-092	Elbow Adapter 1/2" FPT x 3/4" HB, Poly	2
13	24-441	Boom Clamp	2
14	52-418	Pipe Saddle, 1/2" MPT, Poly	3
15	52-582	Cap, Threaded	2
16	69-220	Cable Thimble, 3/16"	4
17	69-300	Cable Swag Assembly 60"	2
18	80-105	Locking Pin	2
19	48-301	Hair Pin	2
20	41-106	3/8" Strut Nut	2
21	45-186	Boom Return Spring	4
22	69-910	Chain #40, Per Foot	Specify
23	41-512	Nylon Lock Nut 5/16" NC	2
25	41-125	Castle Nut 5/8" NF	2
26	45-180	Boom Tension Spring	2
27	64-281	Special Clamp Assembly	2
28	11-285	3 Part Hinge Assembly	1
29	31-112	Boom Hinge Bolt 5/16" NC x 3-1/4"	2
30	35-117	Boom Pivot Bolt 5/8" NF x 4-1/2"	2
32	11-168	Top Spring Bracket	2
33	11-169	Bottom Spring Bracket	2
34	64-406	Black Cap	1
35	64-643	Spray Tip, TP8003VP for 15'/20"	9
35	64-643	Spray Tip, TP8003VP for 15'/20"	9

## SDI Economy Booms

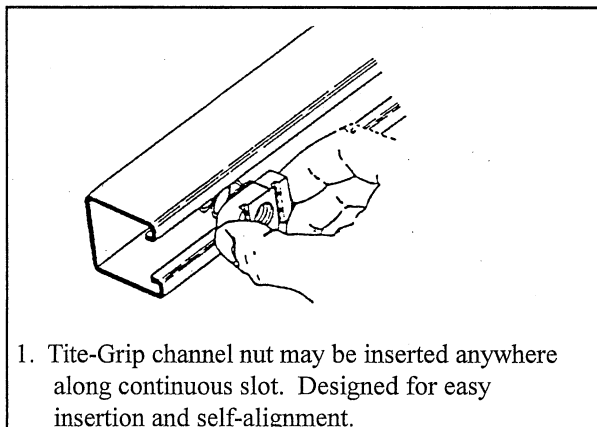
Item Number	Part Number	Description	QTY
35	64-643	Spray Tip, TP8003VP for 20'/20"	12
35	64-643	Spray Tip, TP8003VP for 15'/10"	18
36	64-404	Washer for 15'/20"	9
36	64-404	Washer for 20'/20"	12
36	64-404	Washer for 15'/10"	18
37	64-403	Strainer for 15'/20"	9
37	64-403	Strainer for 20'/20"	12
37	64-403	Strainer for 15'/10"	18
38	64-411	Split Eyelet Check Valve for 15'/20"	9
38	64-411	Split Eyelet Check Valve for 20'/20"	12
38	64-411	Split Eyelet Check Valve for 15'/10"	18
39	64-414	Diaphragm for 15'/20"	9
39	64-414	Diaphragm for 20'/20"	12
39	64-414	Diaphragm for 15'/10"	18
40	64-415	Check Valve for 15'/20"	9
40	64-415	Check Valve for 20'/20"	12
40	64-415	Check Valve for 15'/10"	18
41	42-503	Flat Washer 3/8" SS	6
42	64-280	Split Eyelet Clamp	4
43	11-104	Anchor Plate	2
44	24-401	Cable Clamp	2
45	69-238	S-Hook	4
46	42-104	Flat Washer 1/2" SAE, Plated	4
47	31-503	Hex Bolt 5/16" NC x 1" SS	4
48	34-104	Hex Bolt 1/2" NC x 1-1/4" Plated	12
49	32-102SS	Hex Bolt 3/8" NC x 3/4" SS	2
50	43-104	Lock Washer 1/2" Plated	8
51	41-104	Hex Nut 1/2" NC Plated	8
52	43-105	Lock Washer 5/8" Plated	4
53	64-416	O-Ring, Nozzle Body for 15'/20"	9
53	64-416	O-Ring, Nozzle Body for 20'/20"	12
53	64-416	O-Ring, Nozzle Body for 15'/10"	18
54	32-503	Hex Bolt 3/8" NC x 1" SS	2
55	41-503	Hex Nut 3/8" NC SS	2
56	52-110	Adapter 1/2" FPT X 3/4" HB	1
			05/13/08

Metal framing support system is designed with many time-saving features. Fully adjustable and reuseable, with a complete line of channels, fittings and accessories for multi-purpose applications.

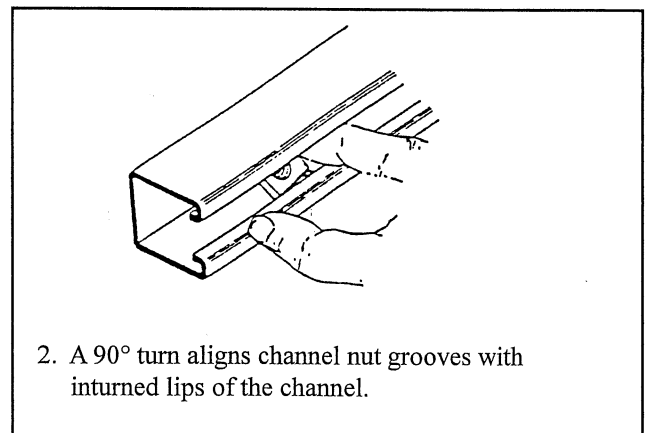


- No Welding
- No Drilling
- Use Your Imagination

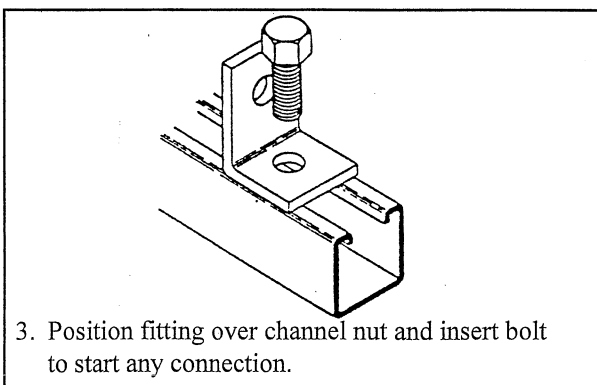
Metal framing installs quickly. There is no need for special tools. All you need is a wrench and hacksaw. Channels and parts can be taken apart for reuse as quickly as they were assembled, yet they provide the strength of welded construction. Eliminating welding and drilling produces substantial savings in time and labor.



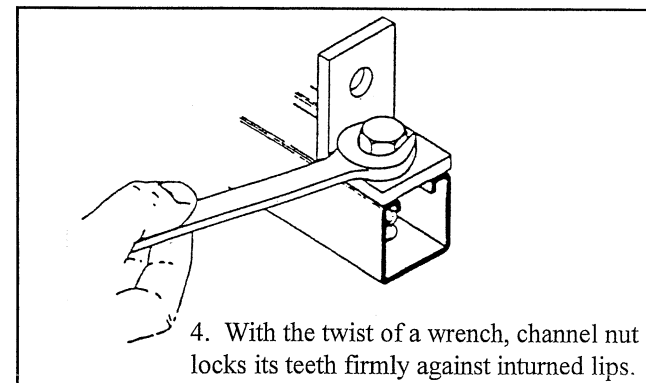
1. Tite-Grip channel nut may be inserted anywhere along continuous slot. Designed for easy insertion and self-alignment.



2. A 90° turn aligns channel nut grooves with inturned lips of the channel.



3. Position fitting over channel nut and insert bolt to start any connection.



4. With the twist of a wrench, channel nut locks its teeth firmly against inturned lips.