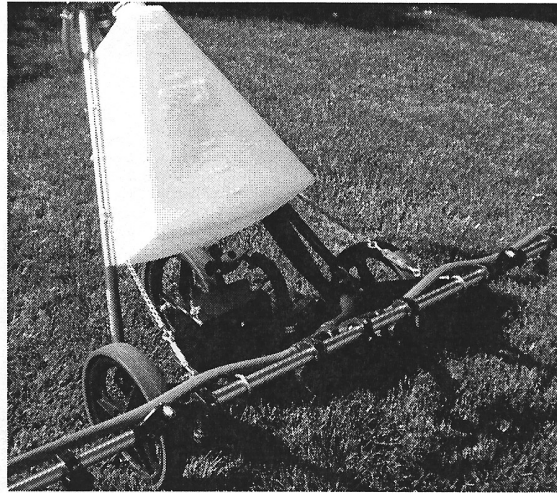




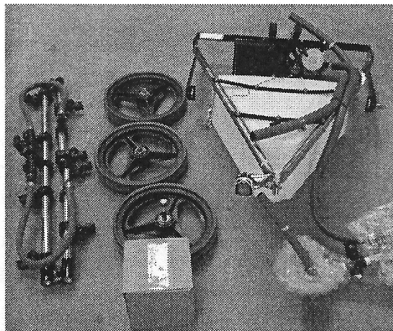
# Product/Service

Spraying Devices  
Inc.

## Turf Walker SC Assembly Instructions



Congratulations on your purchase of the SDI **Turf Walker SC** self contained walking spray boom! We know you'll be delighted with your purchase and it will serve you well for many years.

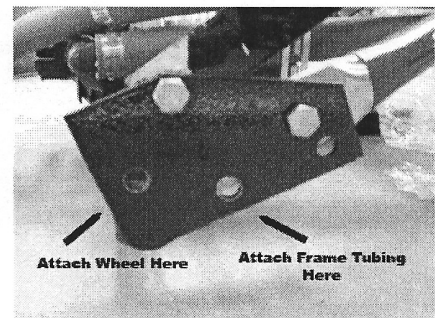


After opening the box, remove the packing material and inspect for damage that might have occurred during shipping. You should have all the parts shown at left.

1) Move the frame tubing (#17 on drawing) to the upright position and insert the 3/8 x 1 1/4" bolt into the lower hole on each side.

2) Install the wheels on the axle (#46) using the supplied bolts attaching the wheel with longest bolt in the center position. Be sure the magnet faces the speedometer pickup on the axle.

3) Attach the spray gun to the top of the frame tubing using the existing 3/8 x 1 1/4" bolt.



Spraying Devices Inc.

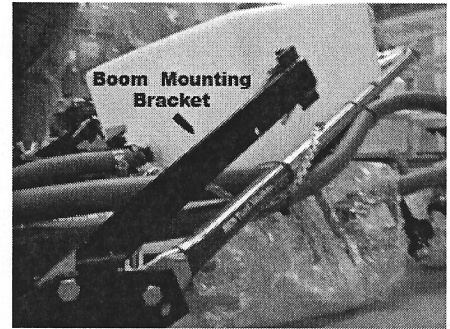
PO Box 3107  
Visalia, CA 93278-3107

Phone: 559-734-5555  
Fax: 559-734-5591  
sales@sprayingdevices.com  
www.sprayingdevices.com

4) Move the boom mounting brackets (29&30) into the forward position.

5) Attach the spray boom to the boom mounting brackets using the turnbuckles to adjust the height of the spray boom. The spray tips should be 10 inches above the ground. If you are unable to achieve the correct height you may need to remove chain links as needed.

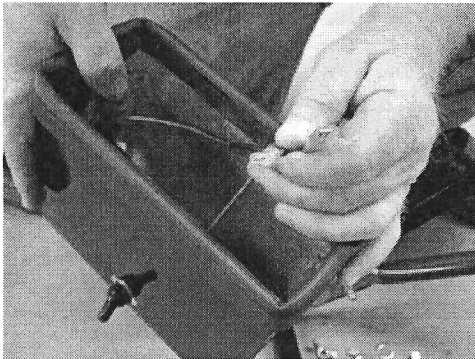
6) Attach the hose to the spray gun, return hose to tank and hose to the spray boom.



7) Remove the battery cover.

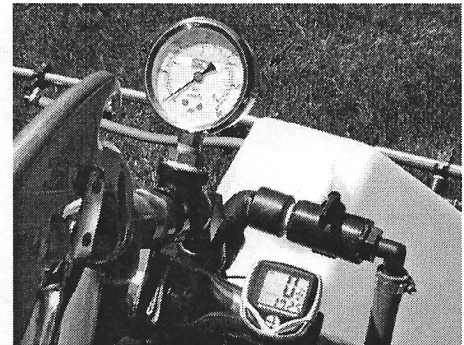
8) Install the battery using the supplied clamp and bolts to secure it to the axle. Connect the spade fittings inside the battery cover to the corresponding connections on the battery and feed the pump connector/recharging plug through the oval hole on the side of the cover.

9) Connect the charger and charge the battery for 8 hours on the initial charge. Confirm that the toggle switch is in the ON position for battery charging.



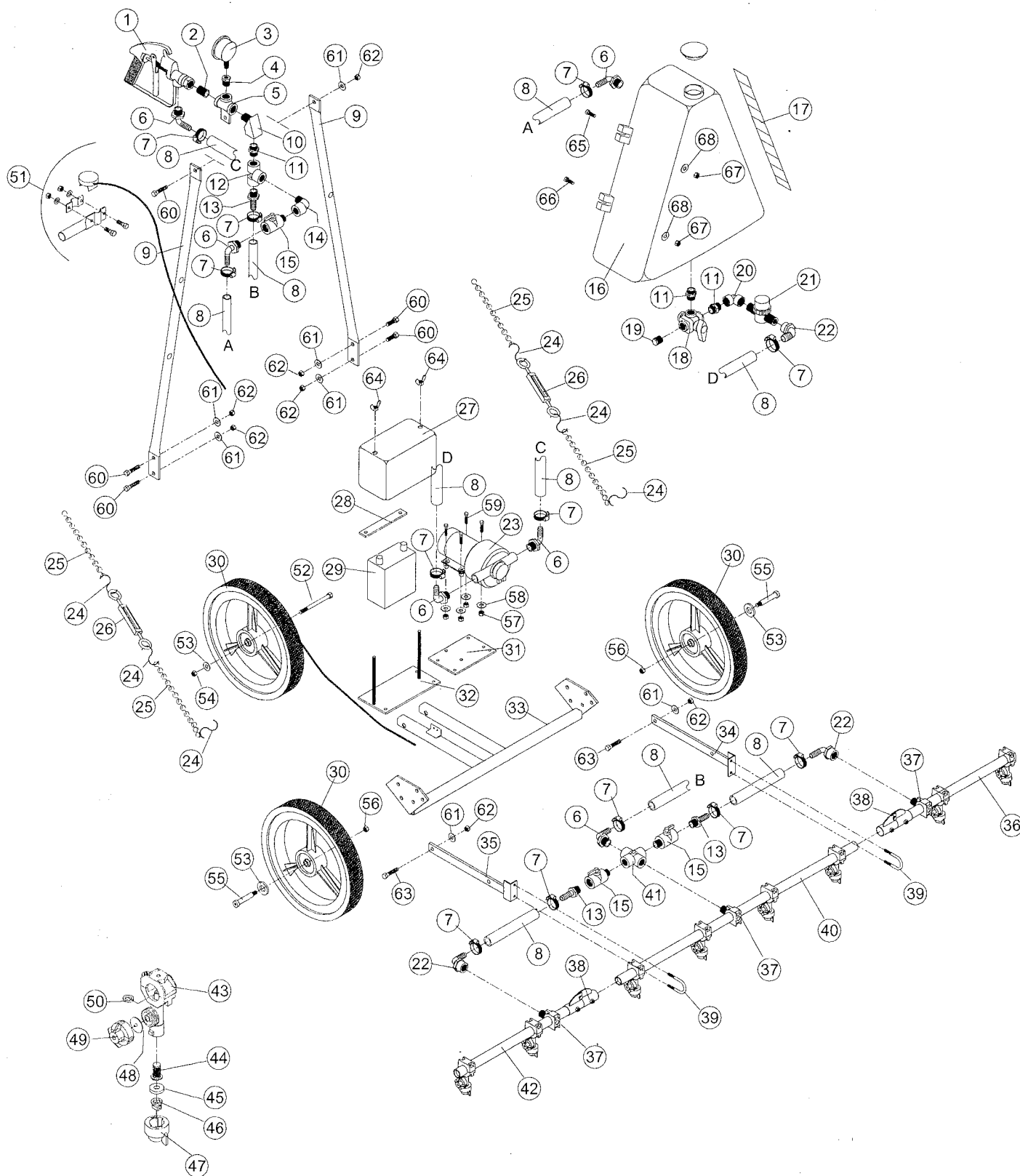
## Using Your Turf Walker SC

- After charging the battery for your initial test, first fill the tank with water.
- Confirm that the 3 way valve on the bottom of the tank is in the open position (handle is vertical).
- Start the pump by flipping the toggle switch to ON. Generally the pump will start for a few seconds then stop.
- Fold down the boom in preparation for spraying.
- Move to the rear of the Turf Walker SC, grip the handle of the spray gun and squeeze the handle to start the spray. It may take a few seconds for the pump to prime and fill the hoses with water.
- When the spray starts to flow from the boom adjust your spray pressure by rotating the lever on the ball valve located by the spray gun. This valve also controls the return of material to the tank.
- We recommend premixing your spray solutions prior to adding them to the tank and not using the tank to mix your spray materials.



We are confident that following the above instructions for assembling and using your sprayer will get you off to a good start. If you have questions on assembly or the proper use of your equipment please contact your dealer.

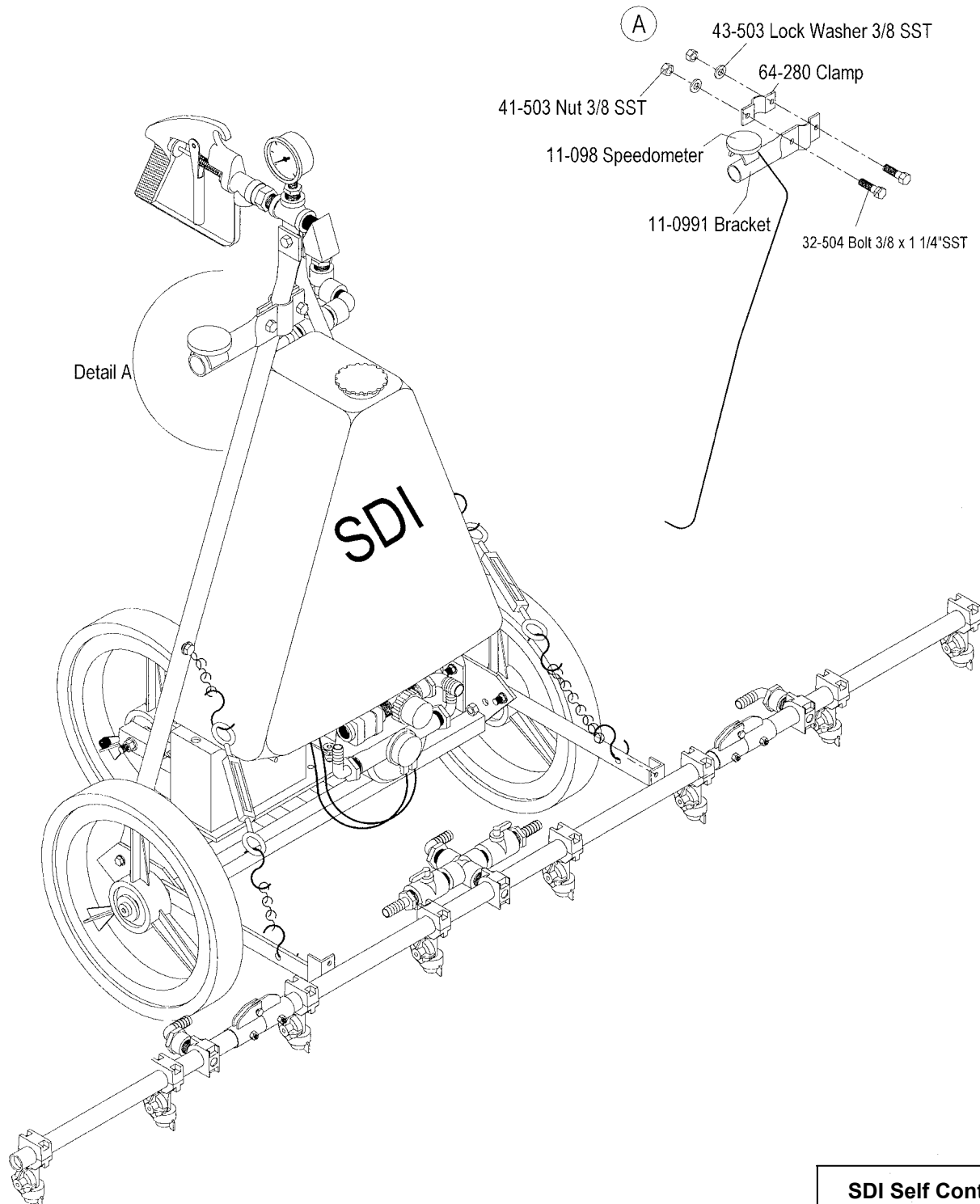
**Thank you for buying a SDI sprayer!**



**SDI Self Contained Turf  
Walker Model WBSC6**

## WBSC6 Assembly Illustration

### Detail "A"



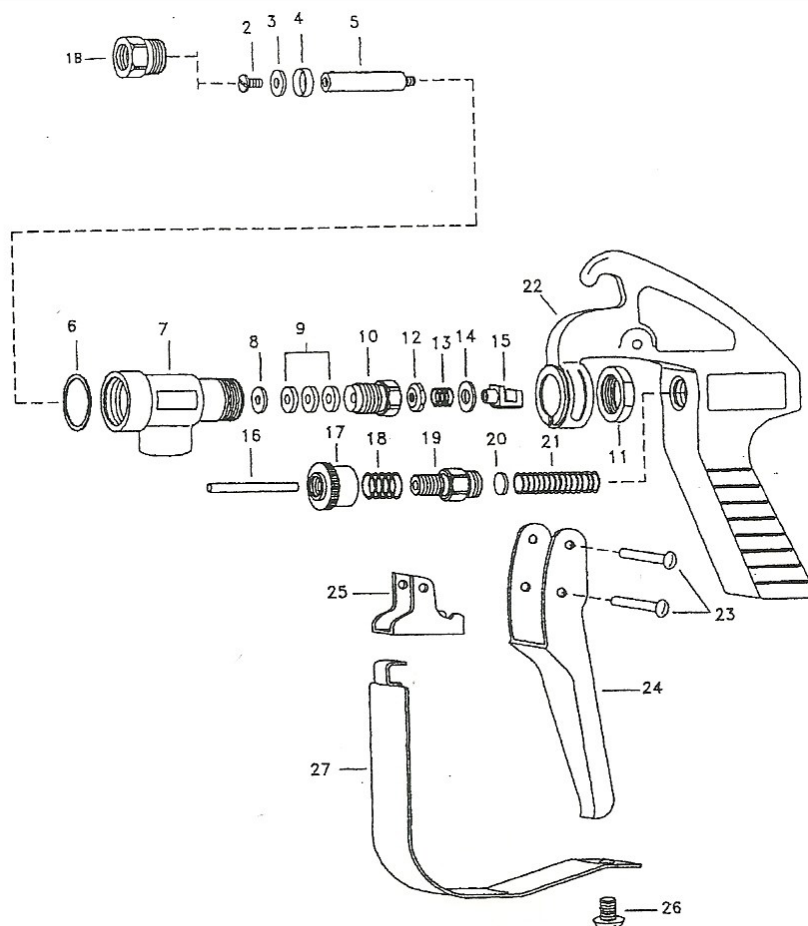
**SDI Self Contained Turf  
Walker Model WBSC6**

## SDI Self Contained Turf Walker, Model WBSC6

Item Number	Part Number	Description	Qty.
	<b>WBSC6</b>	<b>Self-Contained Turf Walker Spray Boom</b>	
1	64-043	Spray Gun	1
2	51-401B	Close Nipple 1/2 In Brass	1
3	27-060	Liquid Filled Gauge 0-60psi	1
4	50-460B	Bushing 1/2 x 1/4 In Brass	1
5	11-071	Tee	1
6	52-111	Elbow Adapter 1/2 MPT x 1/2 In HB Poly	6
7	24-106SS	Hose Clamp	12
8	K1136-1/2	Spray Hose 1/2 PVC Blue 300psi Per Ft.	Specify
9	11-072	Tubing Frame	2
10	50-412B	Street Elbow 45° 1/2 In Brass	1
11	M1200P	Nipple 1/2 In MPT Poly	3
12	TEE050	Tee 1/2 In FPT Poly	1
13	53-094	Adapter 90° 1/2 MPT x 1/2 In HB Poly	3
14	SE12-P	Street Elbow 90° 1/2 MPT x 1/2 In FPT	1
15	LV050MTV	Micro Valve 1/2 Female x 1/2 In Male Poly	3
16	15-013	Tank with Mounting Tabs	1
17	70-035	Sight Gauge Decal	1
18	AA343M-3-1/2-PP	Ball Valve Assembly 3-Way Poly	1
19	53-884	Plug 1/2 In NPT PVC	1
20	EL050-P	Elbow 90° 1/2 x 1/2 In	1
21	3350-0079A	Strainer W/50 Mesh Screen Poly	1
22	53-091	Elbow Adapter 1/2 FPT x 1/2 In HB Poly	3
23	5537-2E1-63B	Pump 5.3 GPM 60psi 12V	1
24	69-238	S-Hook 1-1/2 In	8
25	69-910	Chain Steel Sash Per Ft.	Specify
26	69-288	Turnbuckle 3/16 x 2-7/8 In	2
27	15-095	Battery Box	1
28	11-0681	Battery Hold Down	1
29	79-050	Sealed 12V Battery W/79-051 Charger	1
30	80-030	Tire 12 In W/3 Spoke Wheel and 2 In Hub	3
31	11-0684	Pump/Motor Mount	1
32	11-0685	Battery Mount	1
33	11-069	Axle	1
34	11-073-1	Left Mounting Bracket Tube to Axle	1
35	11-073-1	Right Mounting Bracket Tube to Axle	1
36	51-416	Left Boom Tube	1
37	52-418	Pipe Saddle Assembly	3
38	11-471	Boom Pipe Hinge	2
39	47-103	U-Bolt 1/4 x 1-1/4 x 2-1/4 In	2
40	51-415	Center Boom Tube	1
41	CR050	Cross 1/2 In FPT	1
42	51-417	Right Boom Tube	1
43	64-411	Single Nozzle Body W/Check Valve	8
44	64-403	Strainer Screen Nylon	8
45	64-404	Rubber Washer	8
46	64-643	Tip TP8003VP Poly	8

## SDI Self Contained Turf Walker, Model WBSC6

Item Number	Part Number	Description	Qty.
47	64-406	Black Cap	8
48	64-414	Diaphragm	8
49	64-415/20	Check Valve 20psi	8
50	64-416	O-ring	8
51	81-073	Speedometer Kit	1
52	34-119	Hex Bolt 1/2 x 5 In	1
53	42-104	Flat Washer 1/2 In	4
54	41-514	Lock Nut 1/2 In	1
55	48-047	Shoulder Bolt Socket 1/2 x 2-1/4 In	2
56	41-513	Lock Nut 3/8 In	2
57	41-101SS	Hex Nut 1/4 In NC	10
58	43-101SS	Lock Washer 1/4 In	10
59	31-104SS	Hex Bolt 1/4 x 1-3/4 In	10
60	32-504	Hex Bolt 3/8 x 1-1/4 In	5
61	43-503	Lock Washer 3/4 In	5
62	41-503	Hex Nut 3/8 In	5
63	32-503	Hex Bolt 3/8 NBC x 1 In	2
64	41-502W	Wing Nut 5/16 In	2
65	31-007	Hex Cap Screw 1/4 NC x 2 In	2
66	31-008	Cap Screw 1/4 In NC x 2-1/4 In	2
67	41-511	Lock Nut 1/4 In	4
68	42-501	Flat Washer 1/4 In	4
<i>Item not illustrated:</i>			
	52-588	Tube Plug	2
	72-122	Switch Boot	1
	72-900	Switch Battery/Pump	1



Item No.	Part No.	Description	Qty	
1B	64-6866-1/2	#43C 1/2 Pipe Adapter	1	
•2	N/A	32 x 3/8" Screw SS	6	CP19268-SS/Kit Form Only #64-567
3	64-6740-TEF	Teflon Seat Plate	1	
•4	N/A	Seat Holder	1	CP6863/Kit Form Only #64-567
•5	N/A	Stem, Type 416 SS	1	CP68640416SS/Kit Form Only #64-567
**6	Z-CP7079AL	Adapter Gasket, Aluminum	1	
7	64-873	Inlet Body	1	
**8	Z-CP6601320SS	Packing Washer Type 302 SS	1	
•9	N/A	Leather Packing	3	CP6602-LEA/Kit Form Only #64-567
**10	Z-CP19237	Packing Screw	1	
**11	Z-CP6599	Lock Nut, Brass	1	
•12	N/A	Washer Type 302 SS	1	CP7709-302SS/Kit Form Only #64-567
•13	N/A	Trigger Stop Spring SS	1	CP6595SS/Kit Form Only #64-567
•14	N/A	Washer Steel Zinc Plated	1	CP7991-IZP/Kit Form Only #64-567
**15	Z-CP6597INP	Steel Trigger Guide Nickel Plated	1	
**16	Z-CP6591SS	Spring Stud SS	1	
**17	Z-6589IZP	Steel Stop Adj Nut, Zinc Plated	1	
**18	Z-CP6594SS	Spring for Stop Adj Nut, SS	1	
**19	Z-CP6588IZP	Steel Spring Screw, Zinc Plated	1	
20	CP6592-302SS	Spring Guide Washer Type 302 SS	1	
**21	Z-CP65931SS	Main Spring for 43-L SS	1	
**22	Z-CP144771AL	Handle Body, Aluminum	1	
23	CP76231-IZP	Steel Rivet, Zinc Plated	2	
**24	Z-CP6509INP	Steel Trigger, Zinc Plated	1	•Indicates parts available only in Repair Kit SDI Part #64-567
**25	Z-CP6510INP	Steel Trigger Stop, Nickel Plated	1	
**26	Z-CP11757INP	Steel Screw, Nickel Plated	1	
**27	Z-CP13798INP	Steel Trigger Guard, Nickel Plated	1	**Indicates parts available by special order only and are non-returnable. Delivery time approxi- mately 10 working days after receipt of order.

## Spray Gun for Turf Walkers

### SDI Part No. 64-043